



PARTS CATALOGUE

AL125FC (1LB1) INDONESIA



1M1LB-460E1

()

AL125FC
PARTS CATALOGUE
©2012 by Yamaha Motor Co., Ltd.
1st edition, November 2012
All rights reserved.
Any reprinting or unauthorized use
without the written permission of
Yamaha Motor Co., Ltd.
is expressly prohibited.
Printed in Japan.

FOREWORD

This Parts Catalogue is related to the parts for the model(s) on the cover page. When you are ordering replacement parts, please refer to this Parts Catalogue and quote both part numbers and part names correctly.

1. Modifications or additions which have been made after the issue of the Parts Catalogue will be announced in the Parts News.

It is advisable that you make the necessary corrections to the Parts Catalogue according to the Parts News.

2. Abbreviations

The following abbreviations are used in this Parts Catalogue.

“UR” Use specified parts number.

“UN” Use as many as needed.

“AP” Alternate Parts

“LM” Locally Made (Parts need to be ordered locally)

“F#” Frame No. (Applicable machine No.)

“O/S” Over Size

3. The number of components for assembly

- Parts, which are to be supplied in an assembly, are listed with a dot (.) in front of the part name as shown below.
- The numeral appearing to the right of each component part indicates the quantity of parts for each assembly unit.

PART NO.	DESCRIPTION	Q'TY	REMARKS
2F5-83310-60	FRONT FLASHER LIGHT ASSY	2	
115-83311-60	.BULB (6V-18W)	1	

4. Applicable colours of graphics are represented in the “REMARKS” as shown below.

PART NO.	DESCRIPTION	Q'TY	REMARKS
2N4-24110-00-X5	FUEL TANK COMP.	2	MXR
3J1-24240-10	.GRAPHIC, FUEL TANK	1	FOR MXR

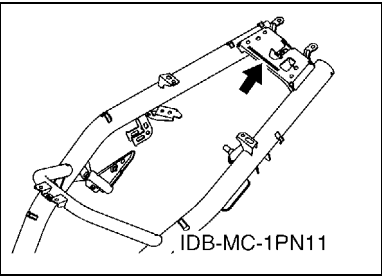
5. Note that the illustrations for reference in finding parts numbers are not to be used for assembling. When assembling, please use the applicable service manual.

6. The asterisk (*) before a reference number indicates modified items after the first edition.

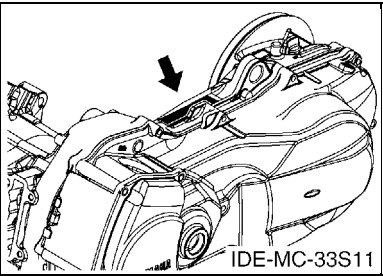
FOREWORD

7. Applicable Serial No.

Frame Serial No.



Engine Serial No.



8. Applicable Colour Code (The (*) mark shows Model colour.)

Abbreviation	Colour Name	Colour Code
BIB2	BLUISH BLACK 2	007B
DBPM3(*)	DARK BLUISH PURPLE METALLIC 3	1286
RM7(*)	RED METALLIC 7	1218
RYC1	REDDISH YELLOW COCKTAIL 1	0251
SMX(*)	BLACK METALLIC X	0903
VOM2	VIVID ORANGE METALLIC 2	0552
VPBC5(*)	VIVID PURPLISH BLUE COCKTAIL 5	1177
WM6(*)	WHITE METALLIC 6	1124

9. Applicable Starting Serial No.

Frame Serial No.

Serial No.	Name Of Q'ty Column	Model Code

Engine Serial No.

Serial No.	Name Of Q'ty Column	Model Code

CONTENTS

ENGINE

CYLINDER	1
CRANKSHAFT & PISTON	3
VALVE	4
CAMSHAFT & CHAIN	5
WATER PUMP	6
RADIATOR & HOSE	7
OIL PUMP	9
INTAKE	10
EXHAUST	12
CRANKCASE	13
CRANKCASE COVER 1	15
STARTER	16
CLUTCH	17
TRANSMISSION	19

CHASSIS

FRAME	20
FENDER	21
SIDE COVER	22
REAR ARM & SUSPENSION	26
STEERING	27
FUEL TANK	29
SEAT	30
FRONT WHEEL	31
FRONT BRAKE CALIPER	32
REAR WHEEL	33
STEERING HANDLE & CABLE	34
FRONT MASTER CYLINDER	36
STAND & FOOTREST	37
LEG SHIELD	38
GENERATOR	42
STARTING MOTOR	43
METER	44
HEADLIGHT	45
TAILLIGHT	46
HANDLE SWITCH & LEVER	47
ELECTRICAL 1	48
ELECTRICAL 2	49

INDEX

NUMERICAL INDEX	50
-----------------------	----

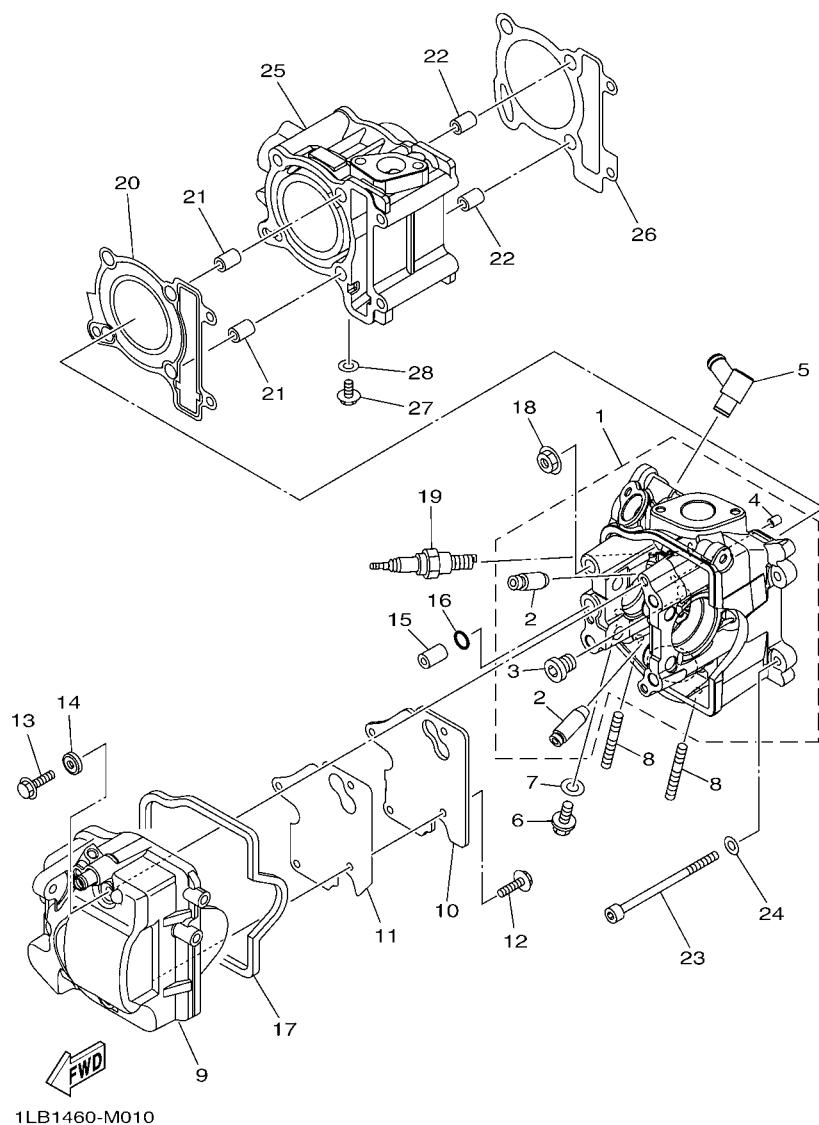


FIG. 1 CYLINDER

REF. NO.	PART NO.	DESCRIPTION	1LB1				REMARKS
1	1LB-E1102-00	CYLINDER HEAD ASSY	1				
2	33S-E1133-10	.GUIDE, VALVE 1	2				
3	90340-12813	.PLUG, STRAIGHT SCREW	1				
4	40D-E5138-00	.NOZZLE 1	1				
5	1LB-E111J-00	PIPE 1	1				
6	95022-06010	BOLT, FLANGE	1				
7	90430-06014	GASKET	1				
8	95612-08618	BOLT, STUD	2				
9	1LB-E1191-00	COVER, CYLINDER HEAD 1	1				
10	1LB-E1165-00	PLATE, BREATHER	1				
11	1LB-E1169-00	GASKET, BREATHER COVER	1				
12	95022-06014	BOLT, FLANGE	4				
13	95812-06035	BOLT, FLANGE	3				
14	1LB-E1173-00	WASHER, SEALING	3				
15	91809-14804	PIN, DOWEL	1				
16	93210-09806	O-RING	1				
17	1LB-E1193-00	GASKET, HEAD COVER 1	1				
18	90179-08518	NUT	4				
19	94700-00891	PLUG, SPARK(NGK CR7E)	1				
20	1PN-E1181-00	GASKET, CYLINDER HEAD 1	1				
21	91810-14809	PIN, DOWEL	2				
22	91810-14809	PIN, DOWEL	2				
23	91312-06095	BOLT	2				
24	90201-06034	WASHER, PLATE	2				
25	1LB-E1311-00	CYLINDER 1	1				
26	44D-E1351-00	GASKET, CYLINDER	1				
27	95022-06010	BOLT, FLANGE	1				

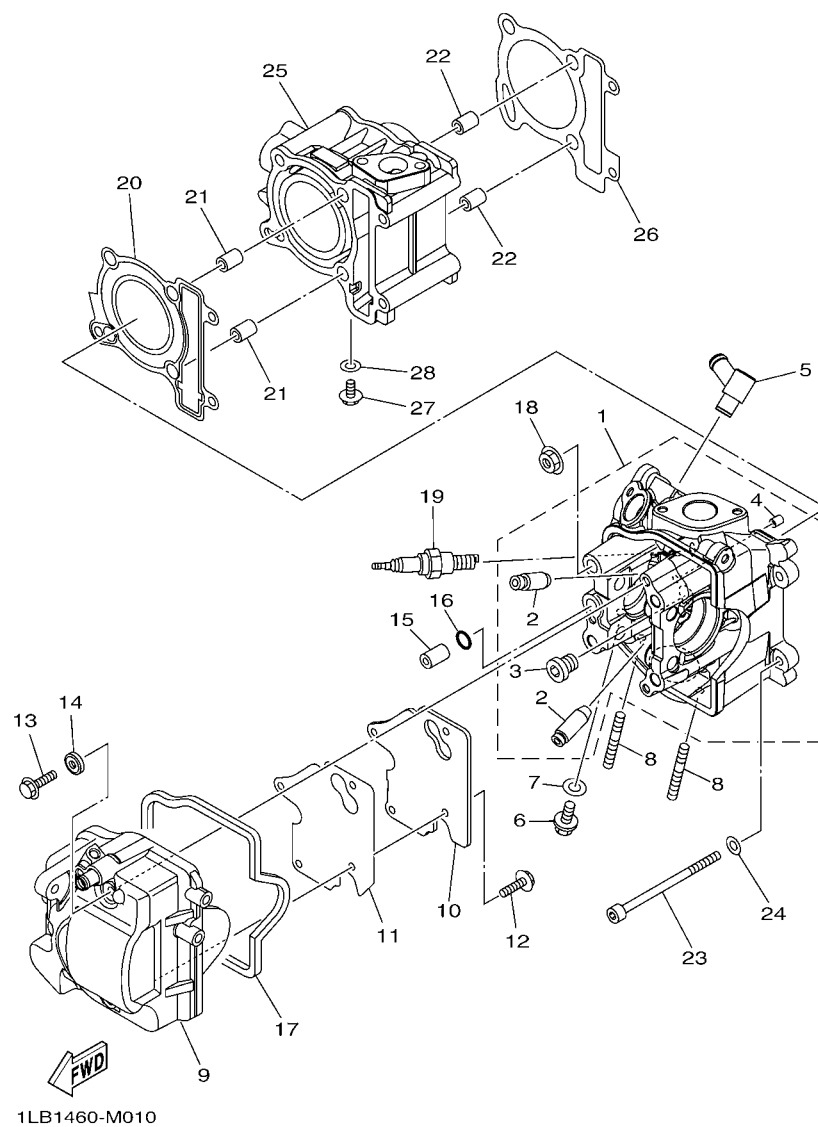


FIG. 1 CYLINDER

[illegible]



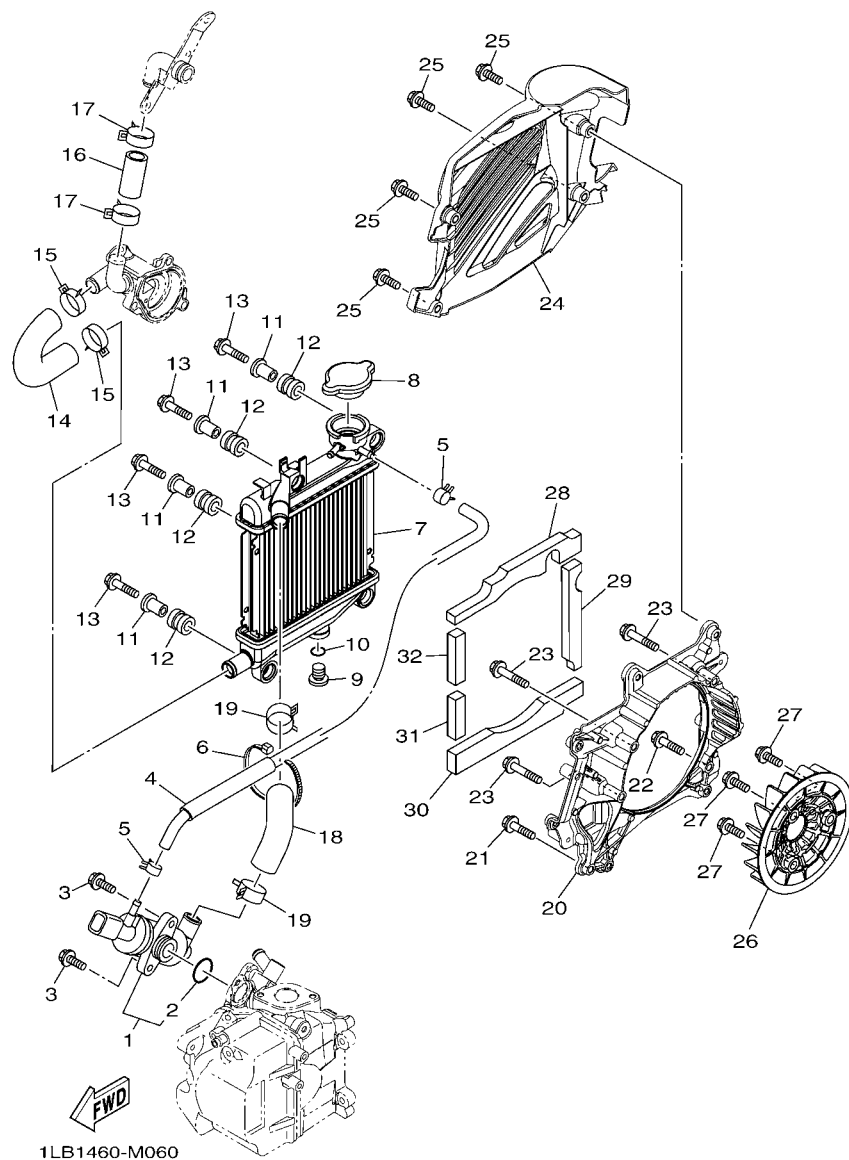


FIG. 6 RADIATOR & HOSE

REF. NO.	PART NO.	DESCRIPTION	1LB1				REMARKS
1	52S-12410-00	THERMOSTAT ASSY	1				
2	52S-12439-00	O-RING	1				
3	95022-06020	BOLT, FLANGE	2				
4	1LB-E2463-00	PIPE, BREATHER	1				
5	90467-090A3	CLIP	2				
6	90464-13073	CLAMP	1				
7	1PN-E2460-00	RADIATOR ASSY	1				
8	33S-E2590-00	CONDUCTION ASSY	1				
9	33S-E2615-00	BOLT	1				
10	33S-E2843-00	O-RING	1				
11	90387-08823	COLLAR	4				
12	90480-15803	GROMMET	4				
13	95827-06030	BOLT, FLANGE	4				
14	44D-E2481-01	PIPE 1	1				
15	90467-22801	CLIP	2				
16	44D-E2482-01	PIPE 2	1				
17	90467-22801	CLIP	2				
18	1LB-E2483-00	PIPE 3	1				
19	90467-22801	CLIP	2				
20	1LB-E2621-00	CASE, FAN	1				
21	95812-06025	BOLT, FLANGE	1				
22	95022-06025	BOLT, FLANGE	1				
23	95022-06035	BOLT, FLANGE	3				
24	1LB-E2467-00	COVER, RADIATOR	1				
25	95027-06020	BOLT, FLANGE	4				
26	44D-E2611-00	FAN	1				
27	95822-06016	BOLT, FLANGE	3				

[illegible]

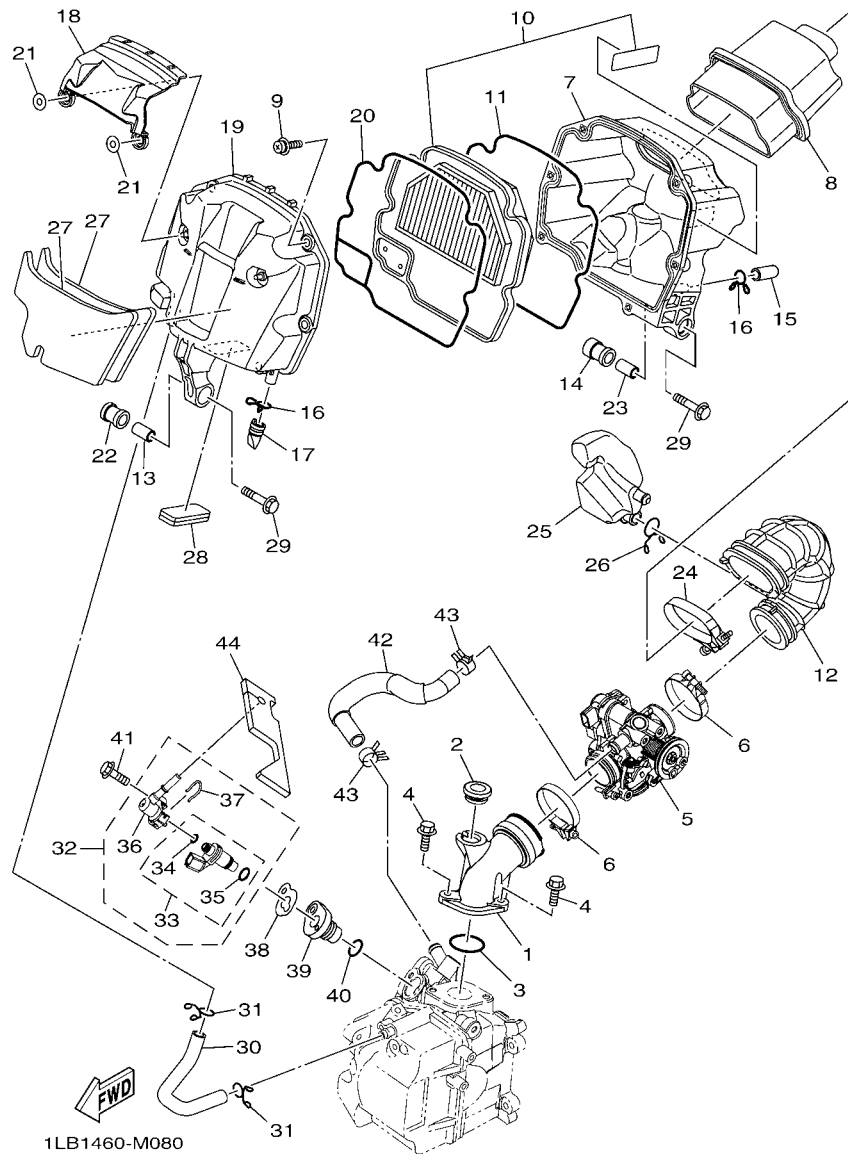


FIG. 8 INTAKE

REF. NO.	PART NO.	DESCRIPTION	1LB1				REMARKS
1	1PN-E3585-00	MANIFOLD	1				
2	1LB-E5357-00	GROMMET	1				
3	93210-30611	O-RING	1				
4	95022-06020	BOLT, FLANGE	2				
5	1LB-E3750-00	THROTTLE BODY ASSY	1				
6	90450-46803	HOSE CLAMP ASSY	2				
7	1LB-E4411-00	CASE, AIR CLEANER 1	1				
8	1LB-E4422-00	CAP, CLEANER CASE 2	1				
9	97602-05320	SCREW, PAN HEAD WITH WASHER	6				
10	1LB-WE445-00	AIR CLEANER ELEMENT ASSY	1				
11	1LB-E4452-00	SEAL	1				
12	1LB-E4453-00	JOINT, AIR CLEANER 1	1				
13	44D-E4449-00	COLLAR	1				
14	1LB-E4435-00	GROMMET	1				
15	5TL-E443E-00	PIPE, DRAIN	1				
16	90467-12808	CLIP	2				
17	5TP-E443G-00	PIPE, DRAIN 2	1				
18	1LB-E4417-00	COVER 1	1				
19	1LB-E4412-00	CAP, CLEANER CASE 1	1				
20	1LB-E4457-00	SEAL	1				
21	92902-05200	WASHER	2				
22	1LB-E4445-00	GROMMET	1				
23	1LB-E4449-00	COLLAR	1				
24	44D-E4455-00	BAND	1				
25	1LB-E4877-00	RESONATOR	1				
26	90467-18806	CLIP	1				
27	1LB-E4409-00	DAMPER	2				

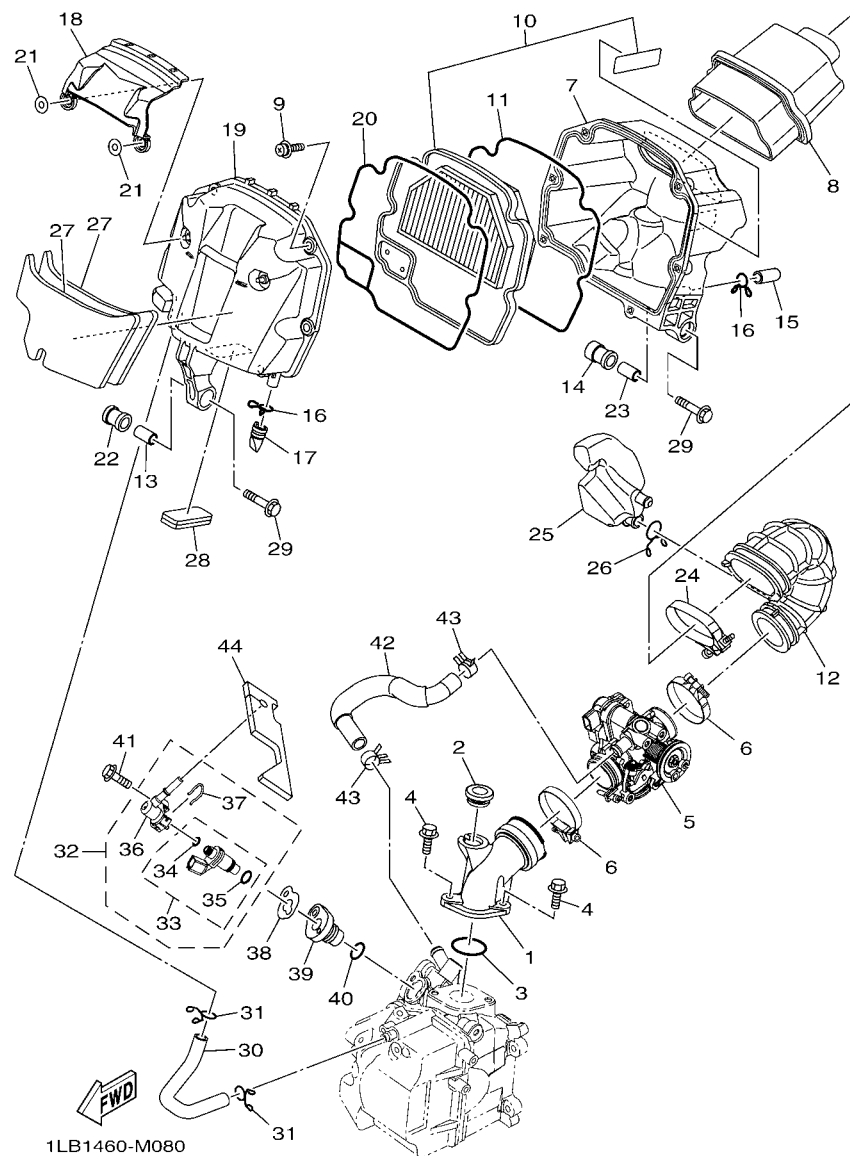


FIG. 8 INTAKE

REF. NO.	PART NO.	DESCRIPTION	1LB1				REMARKS
28	1LB-E4425-00	DAMPER 1	1				
29	95812-06035	BOLT, FLANGE	2				
30	1LB-E1166-00	PIPE, BREATHER 1	1				
31	90467-11825	CLIP	2				
32	1DB-E3770-00	INJECTOR ASSY	1				
33	54P-E3761-00	.INJECTOR	1				
34	54P-E4147-00	..O-RING	1				
35	5CA-E4147-00	..O-RING	1				
36	1DB-E3938-00	.PIPE	1				
37	54P-E4137-00	.CLIP	1				
38	1LB-E3557-00	GASKET	1				
39	1PN-E2572-00	ADAPTER	1				
40	93210-17802	O-RING	1				
41	95812-06030	BOLT, FLANGE	1				
42	1LB-E3895-00	HOSE, AIR	1				
43	90467-15802	CLIP	2				
44	1LB-E4426-00	DAMPER 2	1				

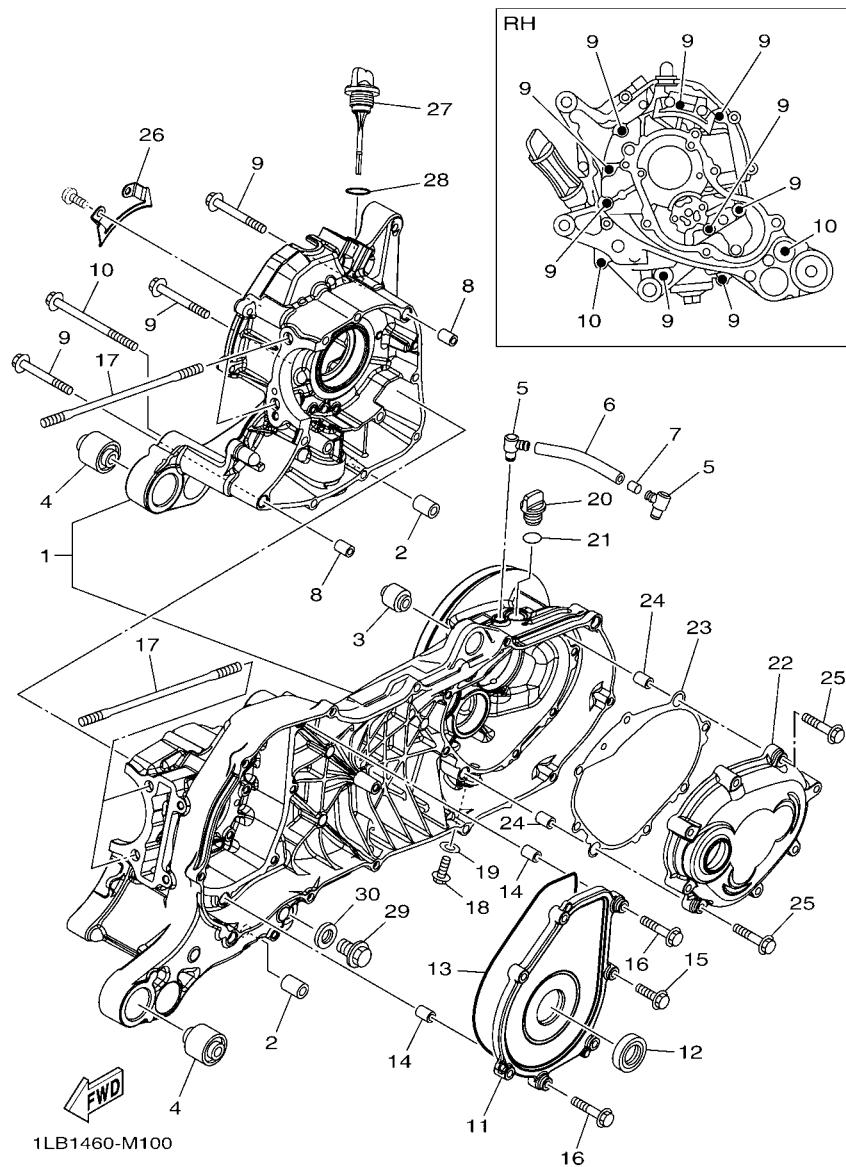


FIG. 10 CRANKCASE

REF. NO.	PART NO.	DESCRIPTION	1LB1				REMARKS
1	1LB-E5150-00	CRANKCASE ASSY	1				
2	54P-F7121-00	BUSH	2				
3	5MX-F2216-00	BUSH, REAR SHOCK ABSORBER	1				
4	90388-10808	DAMPER	2				
5	5LW-E5371-01	BREATHER	2				
6	44D-E5373-00	PIPE, BREATHER	1				
7	14D-E5408-00	ELEMENT 2	1				
8	91810-14809	PIN, DOWEL	2				
9	95022-06060	BOLT, FLANGE	9				
10	95022-06100	BOLT, FLANGE	2				
11	44D-E5423-00	COVER 2	1				
12	93102-25815	OIL SEAL	1				
13	93211-44801	O-RING	1				
14	91810-14809	PIN, DOWEL	2				
15	95022-06025	BOLT, FLANGE	5				
16	95022-06035	BOLT, FLANGE	2				
17	90116-08843	BOLT, STUD	4				
18	95812-08016	BOLT, FLANGE	1				
19	90430-08119	GASKET	1				
20	5LW-E5363-00	PLUG, OIL	1				
21	93210-14816	O-RING	1				
22	44D-E5421-00	COVER, CRANKCASE 2	1				
23	44D-E5461-00	GASKET, CRANKCASE COVER 2	1				
24	91810-14809	PIN, DOWEL	2				
25	95022-06035	BOLT, FLANGE	8				
26	54P-E5113-00	PLATE	1				
27	1LB-E5362-00	PLUG, OIL LEVEL	1				

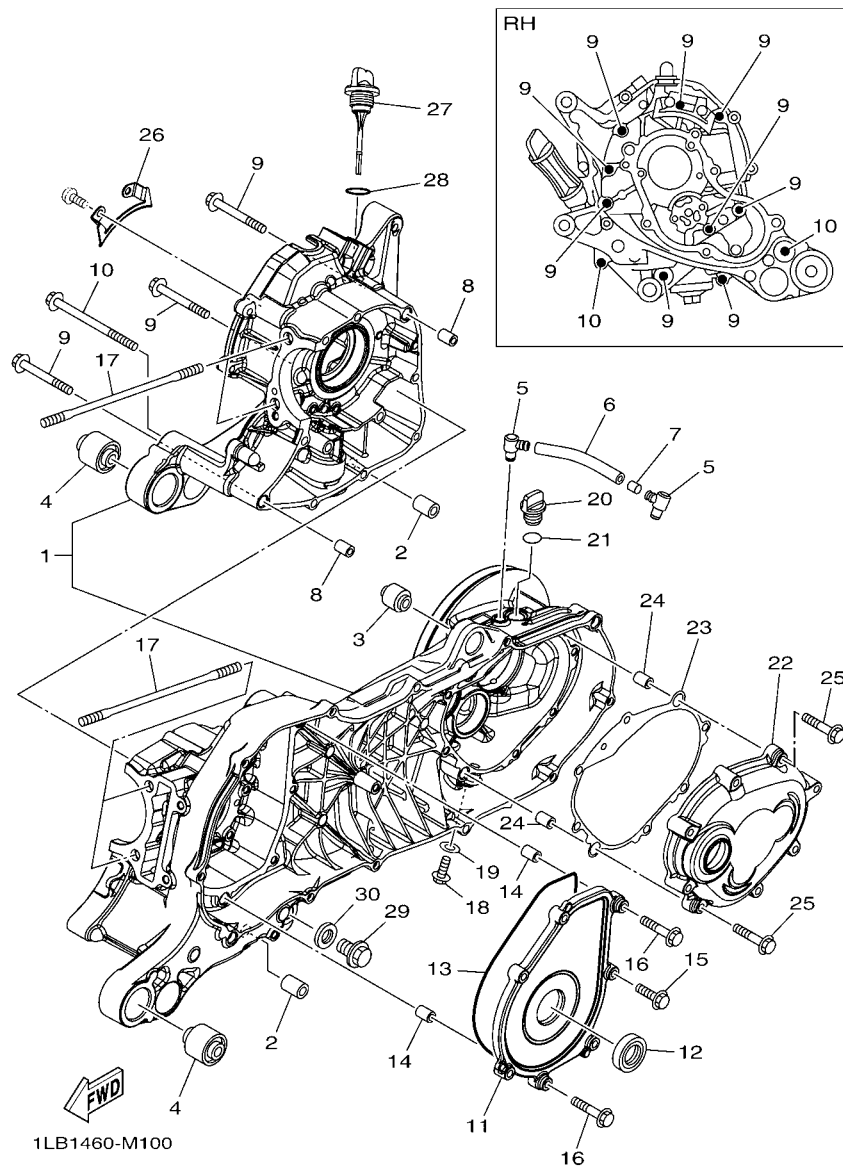


FIG. 10 CRANKCASE

[illegible]

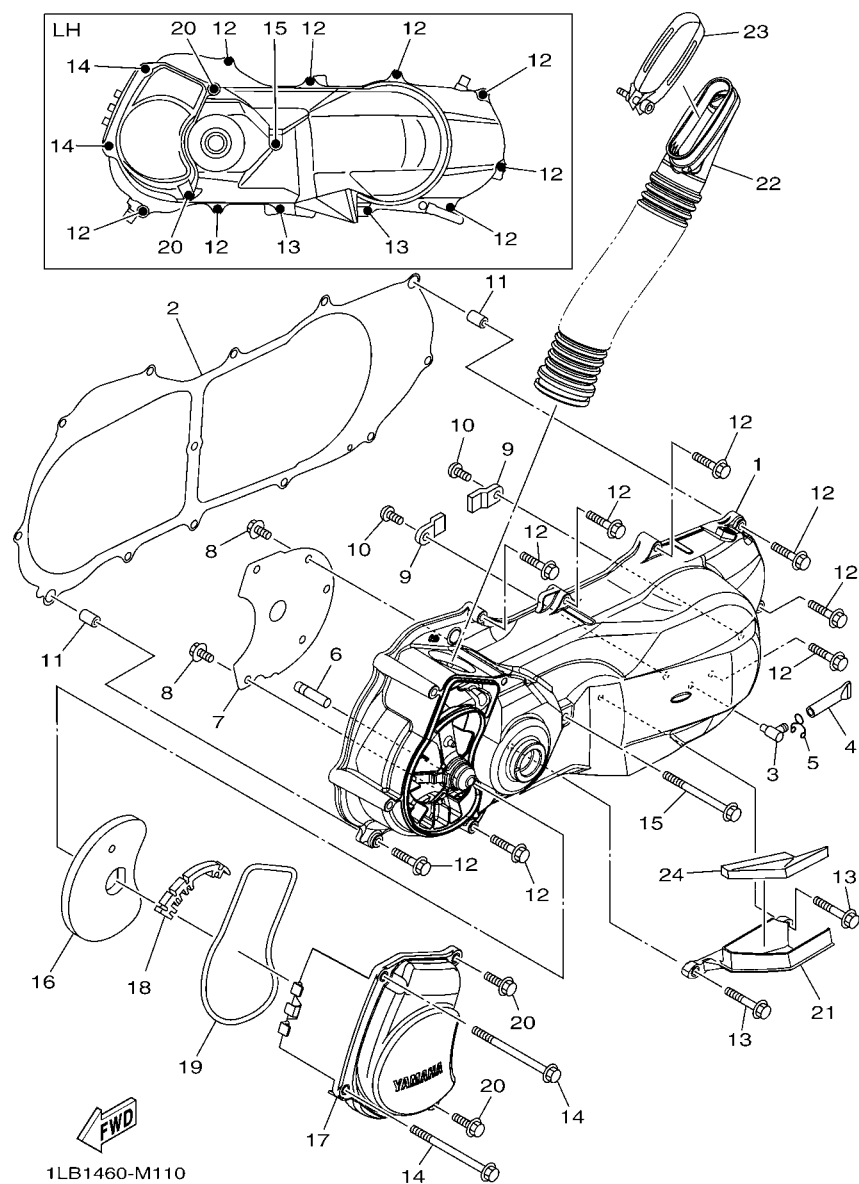


FIG. 11 CRANKCASE COVER 1

[illegible]

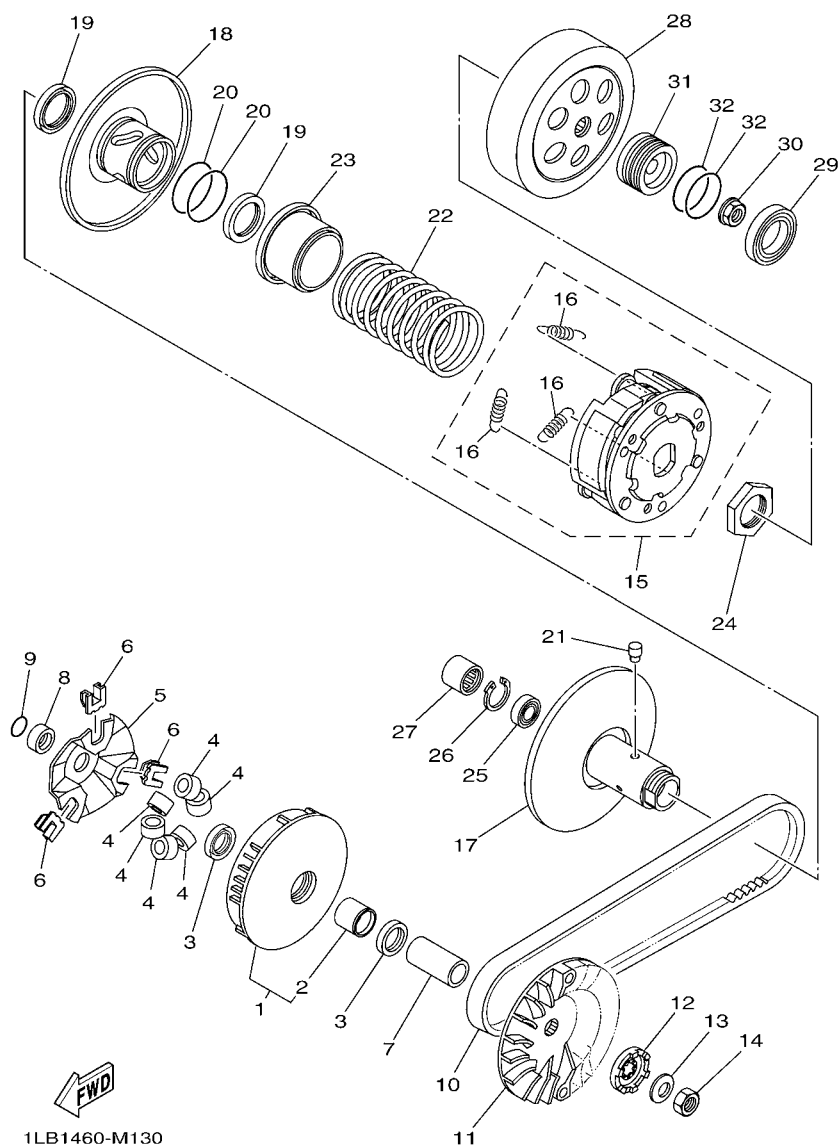


FIG. 13 CLUTCH

REF. NO.	PART NO.	DESCRIPTION	1LB1				REMARKS
1	44D-E7620-00	PRIMARY SLIDING SHEAVE COMP.	1				
2	90380-23800	.BUSH, SOLID	1				
3	93101-23801	OIL SEAL	2				
4	44D-E7632-00	WEIGHT	6				
5	44D-E7623-00	CAM	1				
6	44D-E7653-00	SLIDER	3				
7	90387-16815	COLLAR	1				
8	44D-E7645-00	COLLAR	1				
9	93210-16805	O-RING	1				
10	44D-E7641-00	V-BELT	1				
11	44D-E7611-00	SHEAVE, PRIMARY FIXED	1				
12	5MX-E5657-00	CLUTCH, ONEWAY	1				
13	90208-12808	WASHER, CONICAL SPRING	1				
14	90170-12800	NUT	1				
15	1LB-E6620-00	CLUTCH CARRIER ASSY	1				
16	1LB-E6626-00	.SPRING, CLUTCH WEIGHT 1	3				
17	1LB-E7660-00	SECONDARY FIXED SHEAVE COMP.	1				
18	1LB-E7670-00	SECONDARY SLIDING SHEAVE	1				
19	1LB-E7465-00	SEAL	2				
20	93210-42802	O-RING	2				
21	1LB-E7664-00	PIN, GUIDE	3				
22	1LB-E7683-00	SPRING, SECONDARY	1				
23	1LB-E7690-00	SPRING SEAT COMP.	1				
24	1LB-E7668-00	NUT	1				
25	93306-901Y6	BEARING	1				
26	1LB-E5744-00	CIRCLIP	1				
27	93317-417Y2	BEARING	1				

[illegible]

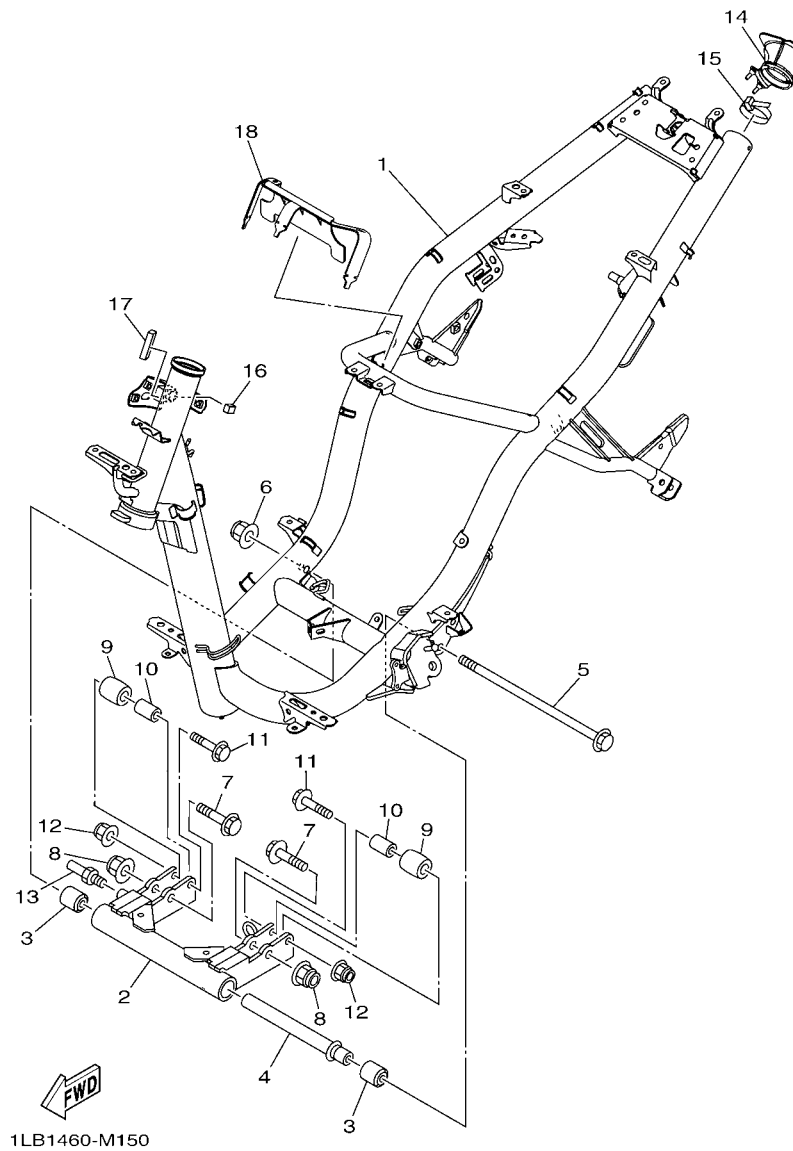


FIG. 15 FRAME

REF. NO.	PART NO.	DESCRIPTION	1LB1				REMARKS
1	1LB-F1110-00	FRAME COMP.	1				
2	1LB-F1410-00	ENGINE BRACKET COMP.	1				
3	90388-10800	DAMPER	2				
4	44D-F1459-00	SPACER	1				
5	44D-F2141-00	SHAFT, PIVOT	1				
6	95602-10200	NUT, U FLANGE	1				
7	90105-10283	BOLT, FLANGE	2				
8	95602-10200	NUT, U FLANGE	2				
9	44D-F7114-00	STOPPER, MAIN STAND	2				
10	90387-08821	COLLAR	2				
11	90105-088E3	BOLT, FLANGE	2				
12	95602-08200	NUT, SELF-LOCKING	2				
13	44D-F7435-00	BOLT	1				
14	44D-F117F-00	COVER	1				
15	90465-13152	CLAMP	1				
16	90520-08800	DAMPER, PLATE	1				
17	90520-08803	DAMPER, PLATE	1				
18	1LB-F117G-00	PROTECTOR	1				

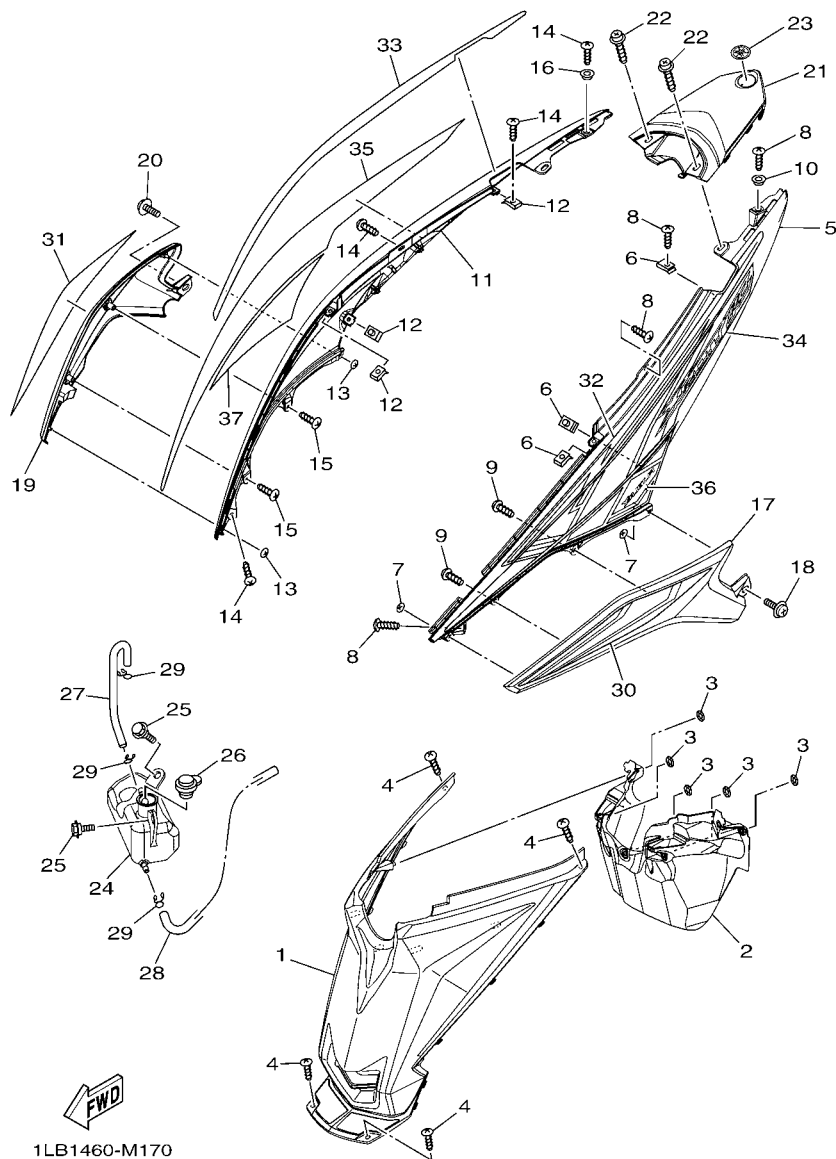


FIG. 17 SIDE COVER

REF. NO.	PART NO.	DESCRIPTION	1LB1				REMARKS
1	1LB-F172W-00	COVER	1				
2	1LB-F177F-00	COVER	1				
3	90183-06815	NUT, SPRING	5				
4	97707-50014	SCREW, TRUSS HEAD TAPPING	4				
5	44D-F1711-00-P1	COVER, SIDE 1	1				UR FOR WM6
	44D-F1711-00-P0	COVER, SIDE 1	1				UR FOR SMX
	44D-F1711-00-P3	COVER, SIDE 1	1				UR FOR RM7
	44D-F1711-00-P5	COVER, SIDE 1	1				UR FOR VPBC5
	44D-F1711-00-P4	COVER, SIDE 1	1				UR FOR DBPM3
6	90183-05807	NUT, SPRING	3				
7	90183-04005	NUT, SPRING	2				
8	97707-50014	SCREW, TRUSS HEAD TAPPING	4				
9	97707-50012	SCREW, TRUSS HEAD TAPPING	2				
10	90387-058M9	COLLAR	1				
11	44D-F1721-00-P1	COVER, SIDE 2	1				UR FOR WM6
	44D-F1721-00-P0	COVER, SIDE 2	1				UR FOR SMX
	44D-F1721-00-P3	COVER, SIDE 2	1				UR FOR RM7
	44D-F1721-00-P5	COVER, SIDE 2	1				UR FOR VPBC5
	44D-F1721-00-P4	COVER, SIDE 2	1				UR FOR DBPM3
12	90183-05807	NUT, SPRING	3				
13	90183-04005	NUT, SPRING	2				
14	97707-50014	SCREW, TRUSS HEAD TAPPING	4				
15	97707-50012	SCREW, TRUSS HEAD TAPPING	2				
16	90387-058M9	COLLAR	1				
17	1LB-F1731-00-P1	COVER, SIDE 3	1				UR VOM2
	1LB-F1731-00-P0	COVER, SIDE 3	1				UR RYC1
	1LB-F1731-00-P2	COVER, SIDE 3	1				UR WM6

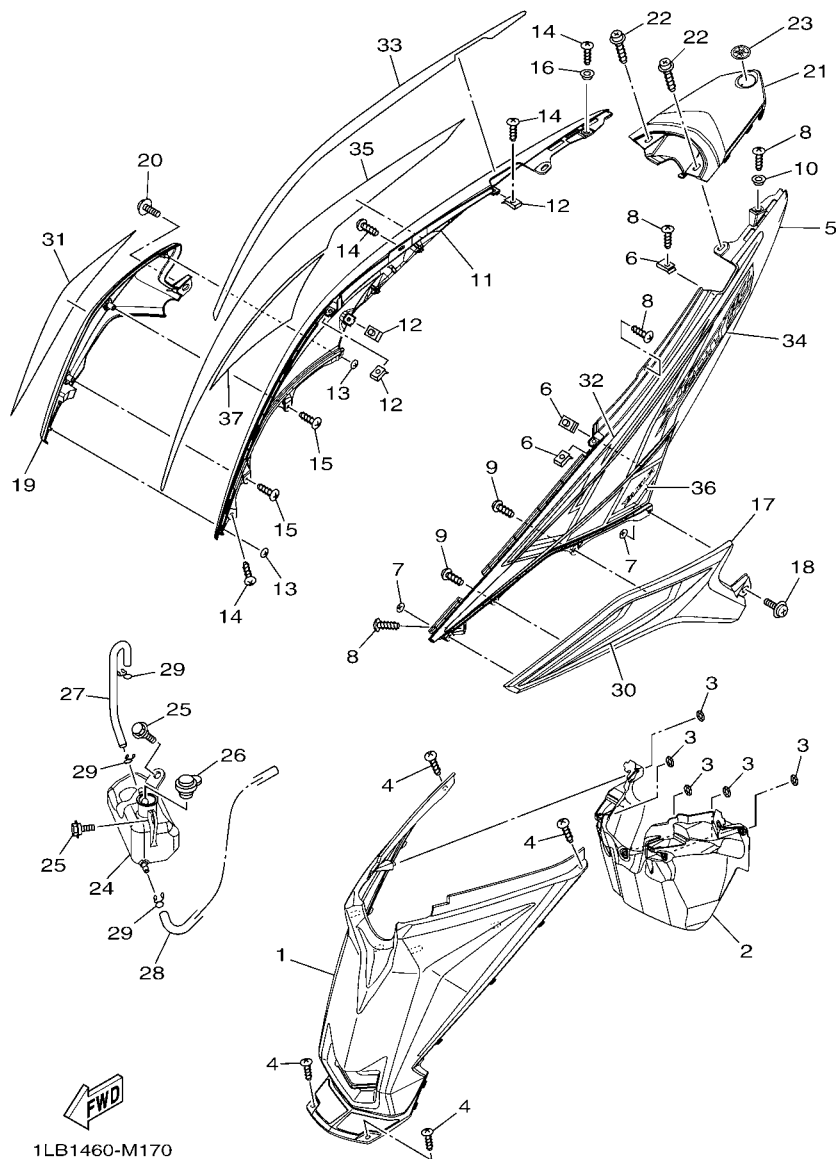


FIG. 17 SIDE COVER

REF. NO.	PART NO.	DESCRIPTION	1LB1				REMARKS
18	90159-06801	SCREW, WITH WASHER	1				
19	1LB-F1741-00-P1	COVER, SIDE 4	1				UR VOM2
	1LB-F1741-00-P0	COVER, SIDE 4	1				UR RYC1
	1LB-F1741-00-P2	COVER, SIDE 4	1				UR WM6
20	90159-06801	SCREW, WITH WASHER	1				
21	44D-F171E-00-P1	COVER, SIDE 5	1				UR FOR WM6
	44D-F171E-00-P0	COVER, SIDE 5	1				UR FOR SMX
	44D-F171E-00-P3	COVER, SIDE 5	1				UR FOR RM7
	44D-F171E-00-P5	COVER, SIDE 5	1				UR FOR VPBC5
	44D-F171E-00-P4	COVER, SIDE 5	1				UR FOR DBPM3
22	90159-06067	SCREW, WITH WASHER	2				
23	40D-F1737-00	EMBLEM	1				
24	44D-F1871-00	TANK, RECOVERY	1				
25	90109-06887	BOLT	2				
26	1S7-F1875-00	CAP	1				
27	44D-F1816-00	PIPE 1	1				
28	44D-F1817-00	PIPE 2	1				
29	90467-08003	CLIP	3				
30	1LB-F173E-00	GRAPHIC 1	1				UR FOR WM6
	1LB-F173E-10	GRAPHIC 1	1				UR FOR SMX
	1LB-F173E-20	GRAPHIC 1	1				UR FOR RM7
	1LB-F173E-30	GRAPHIC 1	1				UR FOR VPBC5
	1LB-F173E-40	GRAPHIC 1	1				UR FOR DBPM3
31	1LB-F173F-00	GRAPHIC 2	1				UR FOR WM6
	1LB-F173F-10	GRAPHIC 2	1				UR FOR SMX
	1LB-F173F-20	GRAPHIC 2	1				UR FOR RM7
	1LB-F173F-30	GRAPHIC 2	1				UR FOR VPBC5

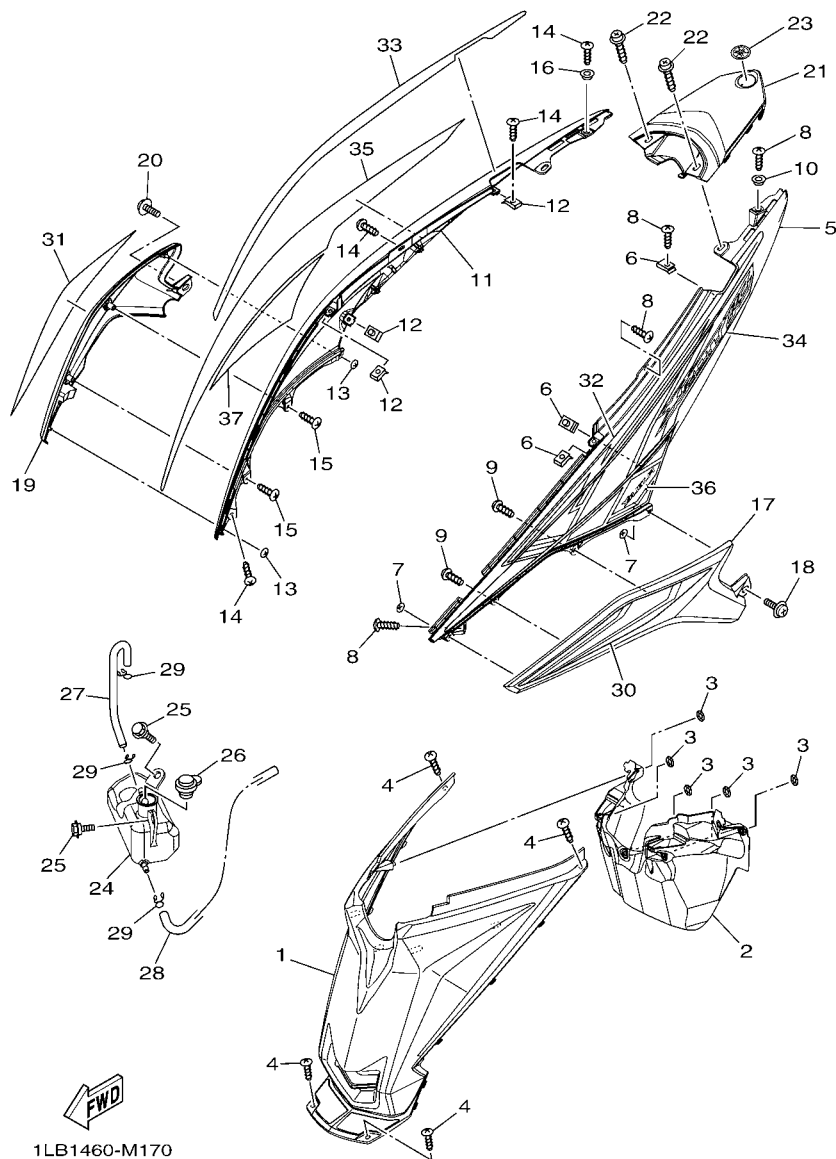
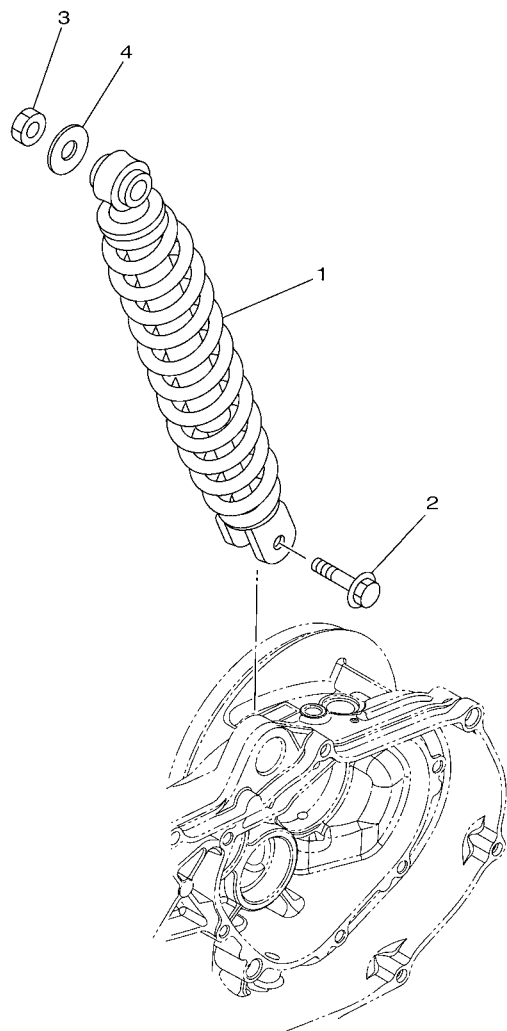


FIG. 17 SIDE COVER

REF. NO.	PART NO.	DESCRIPTION	1LB1				REMARKS
31	1LB-F173F-40	GRAPHIC 2	1				UR FOR DBPM3
32	1LB-F174G-00	GRAPHIC 3	1				UR FOR WM6
	1LB-F174G-10	GRAPHIC 3	1				UR FOR SMX
	1LB-F174G-20	GRAPHIC 3	1				UR FOR RM7
	1LB-F174G-30	GRAPHIC 3	1				UR FOR VPBC5
	1LB-F174G-40	GRAPHIC 3	1				UR FOR DBPM3
33	1LB-F174H-00	GRAPHIC 4	1				UR FOR WM6
	1LB-F174H-10	GRAPHIC 4	1				UR FOR SMX
	1LB-F174H-20	GRAPHIC 4	1				UR FOR RM7
	1LB-F174H-30	GRAPHIC 4	1				UR FOR VPBC5
	1LB-F174H-40	GRAPHIC 4	1				UR FOR DBPM3
34	1LB-F174J-00	GRAPHIC 5	1				UR FOR WM6
	1LB-F174J-10	GRAPHIC 5	1				UR FOR SMX
	1LB-F174J-20	GRAPHIC 5	1				UR FOR RM7
	1LB-F174J-30	GRAPHIC 5	1				UR FOR VPBC5
	1LB-F174J-40	GRAPHIC 5	1				UR FOR DBPM3
35	1LB-F174K-00	GRAPHIC 6	1				UR FOR WM6
	1LB-F174K-10	GRAPHIC 6	1				UR FOR SMX
	1LB-F174K-20	GRAPHIC 6	1				UR FOR RM7
	1LB-F174K-30	GRAPHIC 6	1				UR FOR VPBC5
	1LB-F174K-40	GRAPHIC 6	1				UR FOR DBPM3
36	1LB-F173X-00	GRAPHIC 7	1				UR FOR WM6
	1LB-F173X-10	GRAPHIC 7	1				UR FOR SMX
	1LB-F173X-20	GRAPHIC 7	1				UR FOR RM7
	1LB-F173X-30	GRAPHIC 7	1				UR FOR VPBC5
	1LB-F173X-40	GRAPHIC 7	1				UR FOR DBPM3
37	1LB-F173Y-00	GRAPHIC 8	1				UR FOR WM6



1PN1431-M180

FIG. 18 REAR ARM & SUSPENSION

REF. NO.	PART NO.	DESCRIPTION	1LB1				REMARKS
1	1LB-F2210-00	SHOCK ABSORBER ASSY, REAR	1				UR EXCEPT FOR SMX
	1LB-F2210-10	SHOCK ABSORBER ASSY, REAR	1				UR FOR SMX
2	90105-088E8	BOLT, FLANGE	1				
3	95302-10600	NUT	1				
4	90201-10065	WASHER, PLATE	1				

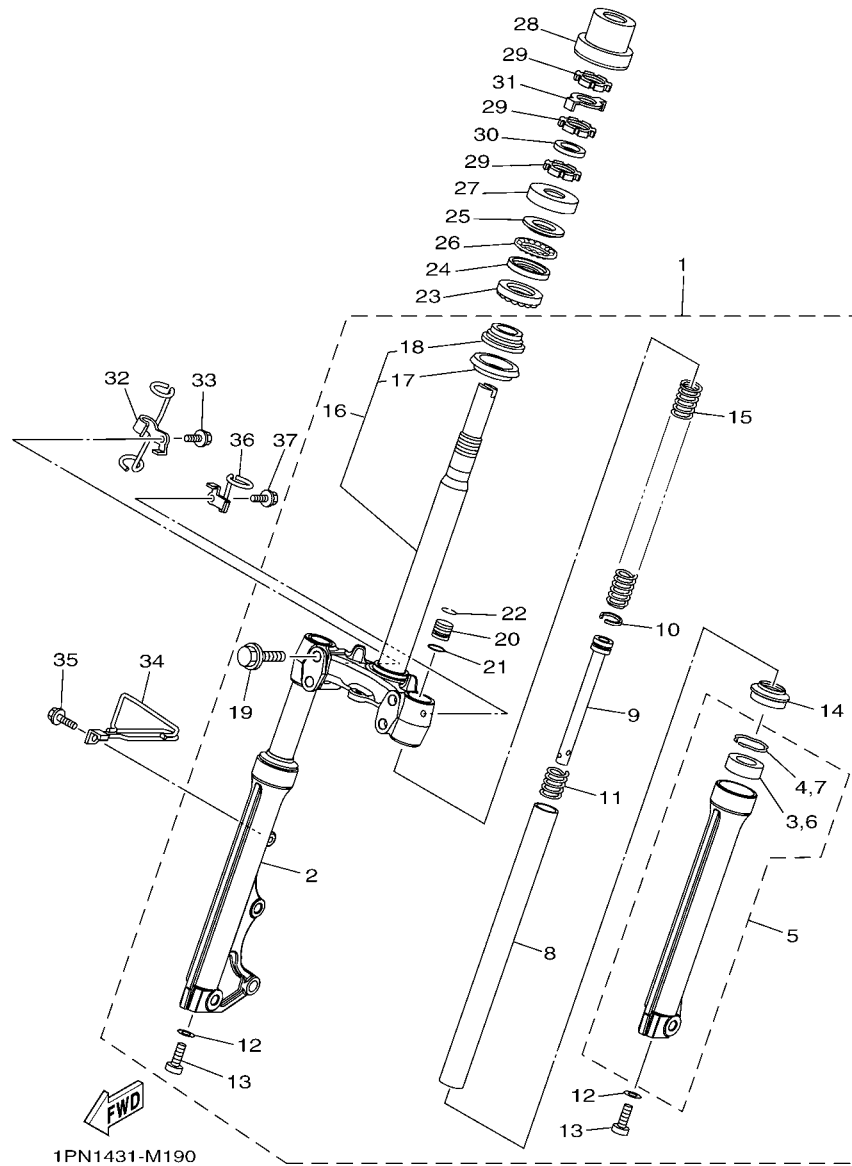


FIG. 19 STEERING

REF. NO.	PART NO.	DESCRIPTION	1LB1				REMARKS
1	1LB-F3100-00	FRONT FORK ASSY	1				
2	1LB-F3136-00	.TUBE, OUTER (RIGHT)	1				
3	3AY-F3145-00	..OIL SEAL	1				
4	5P0-F3156-00	..RING, SNAP	1				
5	1LB-F3126-00	.TUBE, OUTER (LEFT)	1				
6	3AY-F3145-00	..OIL SEAL	1				
7	5P0-F3156-00	..RING, SNAP	1				
8	1LB-F3110-00	.INNER TUBE COMP.1	2				
9	44D-F3170-00	.CYLINDER COMP., FRONT FORK	2				
10	2JG-F3157-00	.RING, PISTON	2				
11	5HV-F3152-00	.SPRING, SUB	2				
12	509-F3158-L0	.GASKET	2				
13	31B-F3181-00	.BOLT, HEXAGON SOCKET HEAD	2				
14	5LM-F3144-00	.SEAL, DUST	2				
15	1LB-F3141-00	.SPRING, FRONT FORK	2				
16	1LB-F3340-00	..UNDER BRACKET COMP.	1				
17	5VC-23462-00	..SEAL, DUST	1				
18	5BP-F3875-00	..BEARING, STEERING LOWER	1				
19	4D0-F3346-00	.BOLT 1	4				
20	28D-F3111-00	.BOLT, CAP	2				
21	2JG-F3147-00	.O-RING	2				
22	31B-F3153-00	.RING, SNAP	2				
23	5BP-F3873-01	BEARING, STEERING UPPER	1				
24	54P-F3412-00	RACE, BALL 2	1				
25	54P-F3411-00	RACE, BALL 1	1				
26	5TL-2341E-10	RETAINER, BALL BEARING (19)	1				
27	3AY-F3416-00	COVER, BALL RACE 2	1				

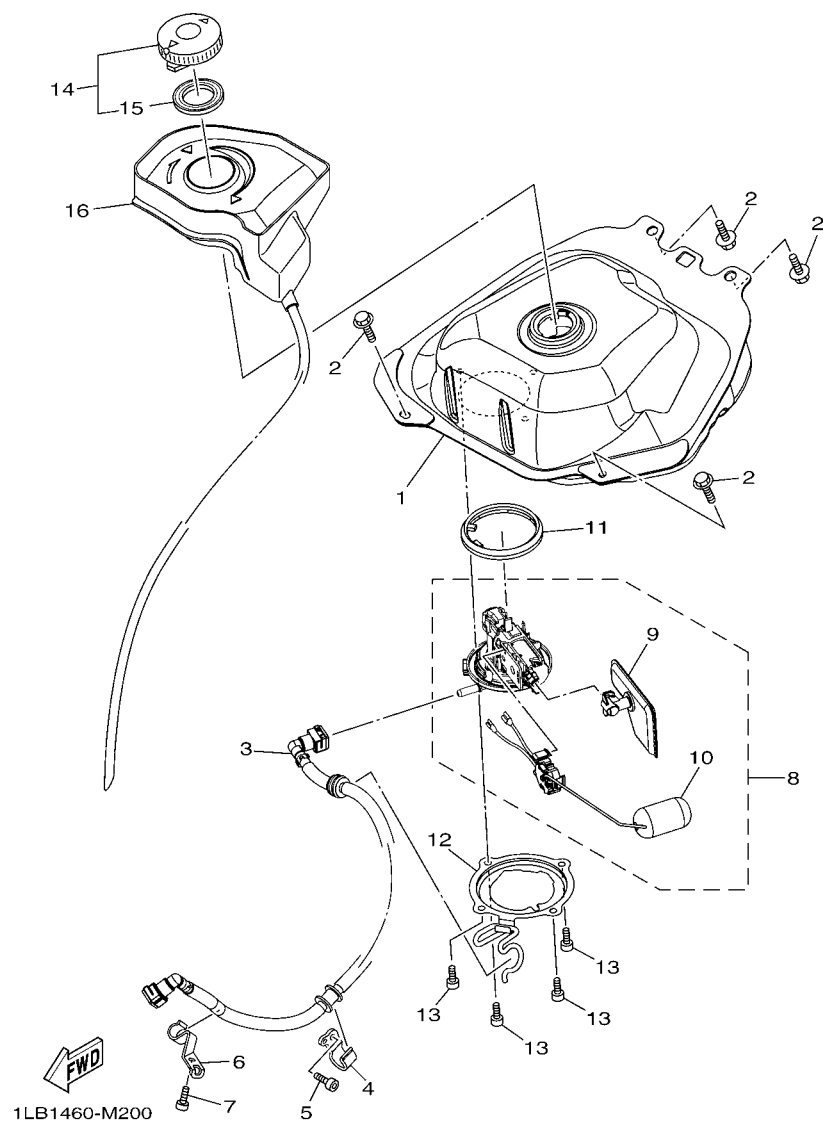


FIG. 20 FUEL TANK

[illegible]

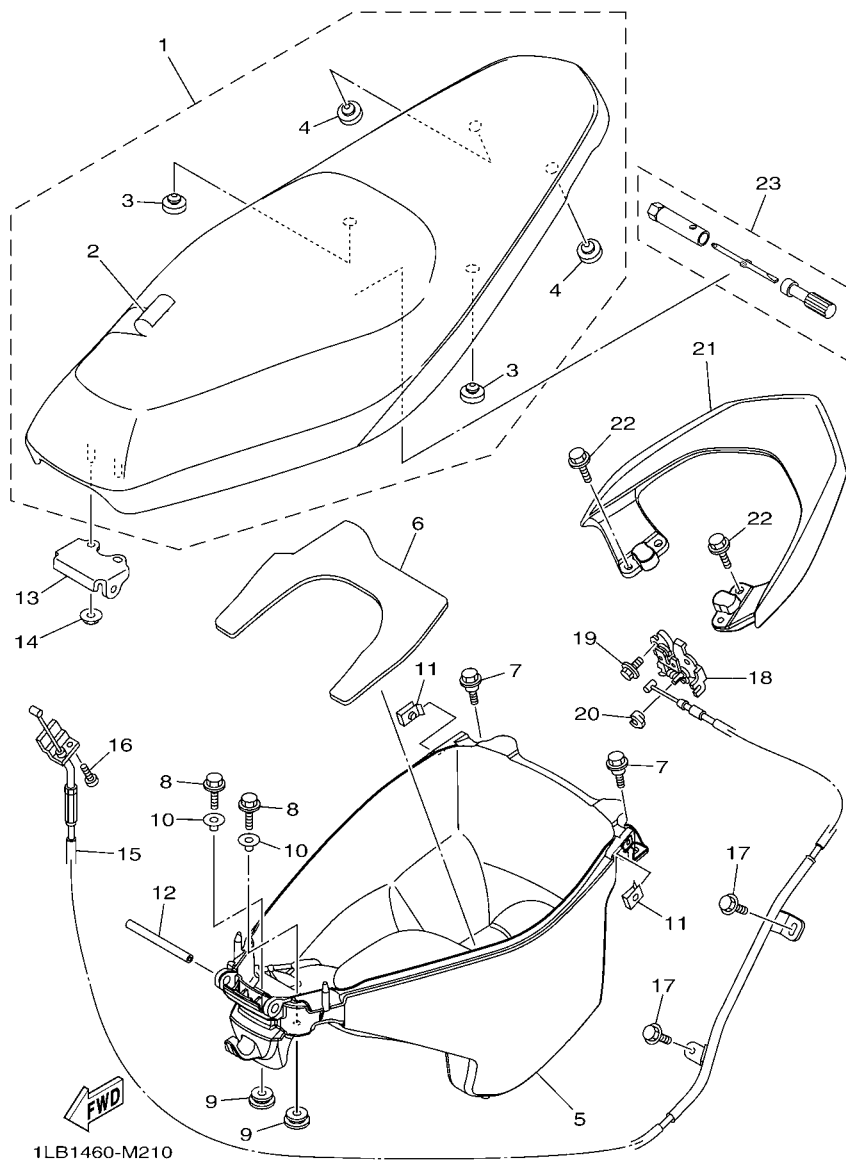


FIG. 21 SEAT

REF. NO.	PART NO.	DESCRIPTION	1LB1				REMARKS
1	44D-F4730-60	DOUBLE SEAT ASSY	1				UR FOR WM6
	44D-F4730-00	DOUBLE SEAT ASSY	1				UR EXCEPT FOR WM6
2	44D-F470F-60	.SEAT COVER COMP.	1				UR FOR WM6
	44D-F470F-00	.SEAT COVER COMP.	1				UR EXCEPT FOR WM6
3	3C1-F4741-00	.PAD, SEAT	2				
4	5BP-F4741-00	.PAD, SEAT	2				
5	1LB-F473R-00	BOX 1	1				
6	44D-F4747-00	DAMPER, SEAT	1				
7	90109-06887	BOLT	2				
8	95822-06020	BOLT, FLANGE	2				
9	90480-14823	GROMMET	2				
10	90387-068G3	COLLAR	2				
11	90183-05807	NUT, SPRING	2				
12	5TL-F4727-00	PIN, SEAT FITTING	1				
13	5TL-F4726-00	HINGE, SEAT	1				
14	95702-06500	NUT, FLANGE	2				
15	44D-F478E-01	CABLE, SEAT LOCK	1				
16	98502-05010	SCREW, PAN HEAD	1				
17	95022-06012	BOLT, FLANGE	2				
18	40D-F4780-01	SEAT LOCK ASSY	1				
19	95022-06010	BOLT, FLANGE	2				
20	1S7-F4768-00	STOPPER	1				
21	44D-F4773-00-P8	HANDLE, SEAT	1				UR VOM2
	44D-F4773-00-P7	HANDLE, SEAT	1				UR RYC1
	44D-F4773-00-P9	HANDLE, SEAT	1				UR WM6
22	95822-06016	BOLT, FLANGE	4				
23	44D-F8100-00	TOOL KIT	1				



REF. NO.	PART NO.	DESCRIPTION	1LB1				REMARKS
1	5TL-F5168-00-3X	CAST WHEEL, FRONT	1				UR DRSC/WSA
	5TL-F5168-00-2X	CAST WHEEL, FRONT	1				UR YB/YS5
	5TL-F5168-00-0X	CAST WHEEL, FRONT	1				UR YB/DRSC
	5TL-F5168-00-1X	CAST WHEEL, FRONT	1				UR YB/WSA
2	90560-10292	SPACER	1				
3	93106-20816	OIL SEAL	1				
4	93306-300YK	BEARING	2				
5	94107-14811	TIRE (70/90-14 M/C 34P NF59)	1				INOUE
6	94207-14802	TUBE (70/90-14M/C TR4)	1				INOUE
7	90387-10837	COLLAR	1				
8	3AY-F5181-01	AXLE, WHEEL	1				
9	90185-10811	NUT, SELF-LOCKING	1				
10	90201-10831	WASHER, PLATE	1				
11	5TL-F5190-01	GEAR UNIT ASSY	1				

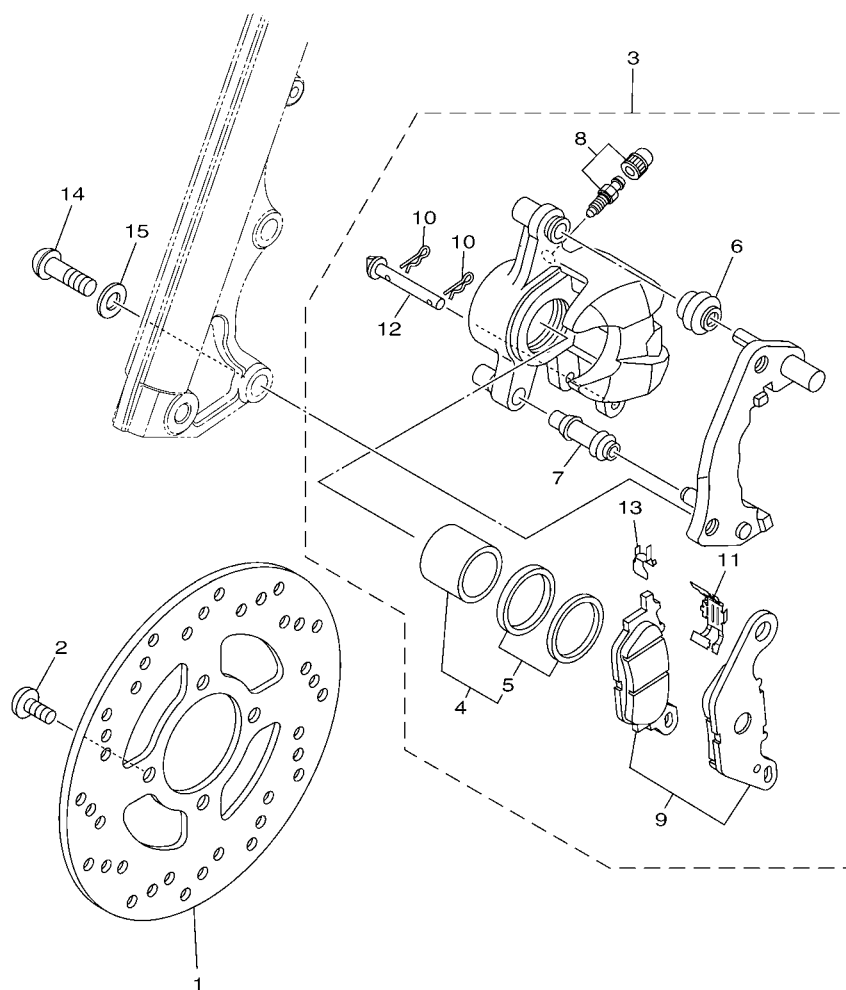


FIG. 23 FRONT BRAKE CALIPER

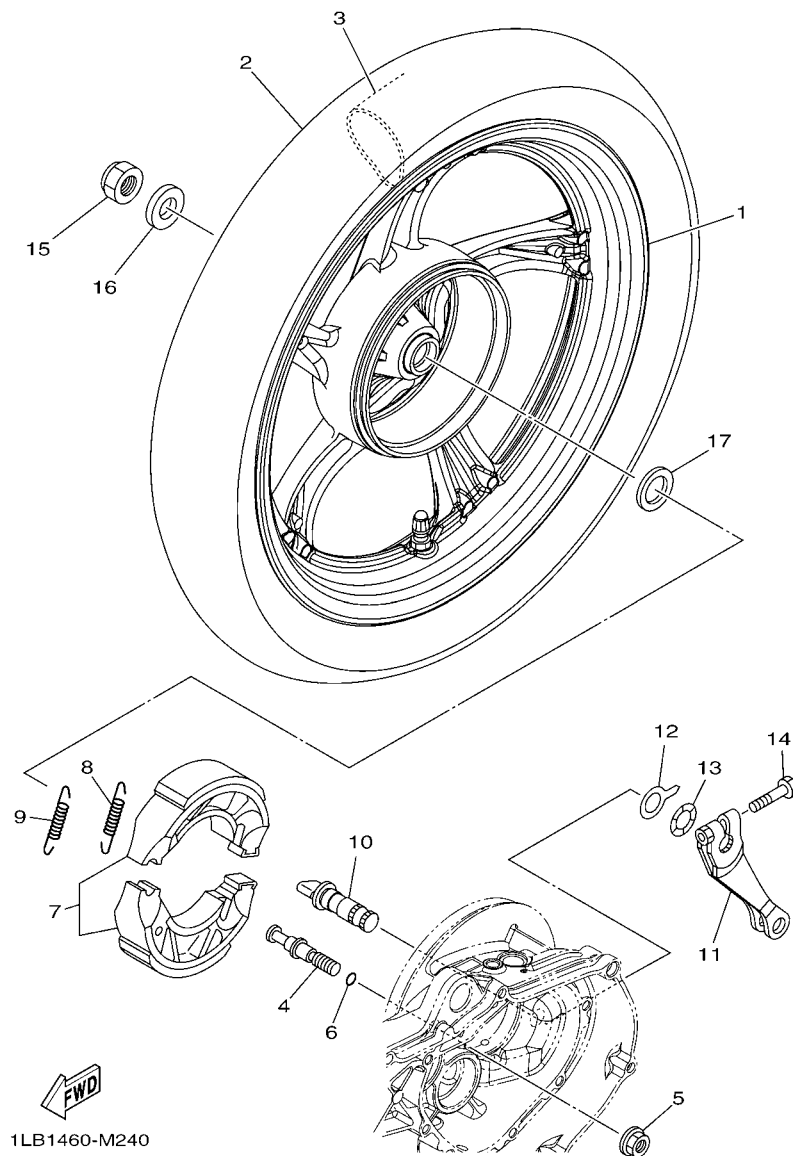


FIG. 24 REAR WHEEL

REF. NO.	PART NO.	DESCRIPTION	1LB1				REMARKS
1	33S-F5338-00-3X	CAST WHEEL, REAR	1				UR DRSC/WSA
	33S-F5338-00-2X	CAST WHEEL, REAR	1				UR YB/YS5
	33S-F5338-00-0X	CAST WHEEL, REAR	1				UR YB/DRSC
	33S-F5338-00-1X	CAST WHEEL, REAR	1				UR YB/WSA
2	94109-14807	TIRE (90/80-14 M/C 49P NR76A)	1				INOUE
3	94209-14800	TUBE(90/80-14M/C TR4)	1				INOUE
4	5LW-F5326-01	PIN, PIVOT	1				
5	95702-10500	NUT, FLANGE	1				
6	93210-07802	O-RING	1				
7	1LB-F530K-00	BRAKE SHOE SET	1				
8	90506-12001	SPRING, TENSION	1				
9	90506-15001	SPRING, TENSION	1				
10	5MX-F5351-00	CAMSHAFT	1				
11	44D-F5355-00	LEVER, CAMSHAFT	1				
12	5MX-F533A-00	PLATE, INDICATOR	1				
13	90206-14093	WASHER, WAVE	1				
14	90101-06046	BOLT	1				
15	90185-16800	NUT, SELF-LOCKING	1				
16	90201-16810	WASHER, PLATE	1				
17	90201-220J8	WASHER, PLATE	1				

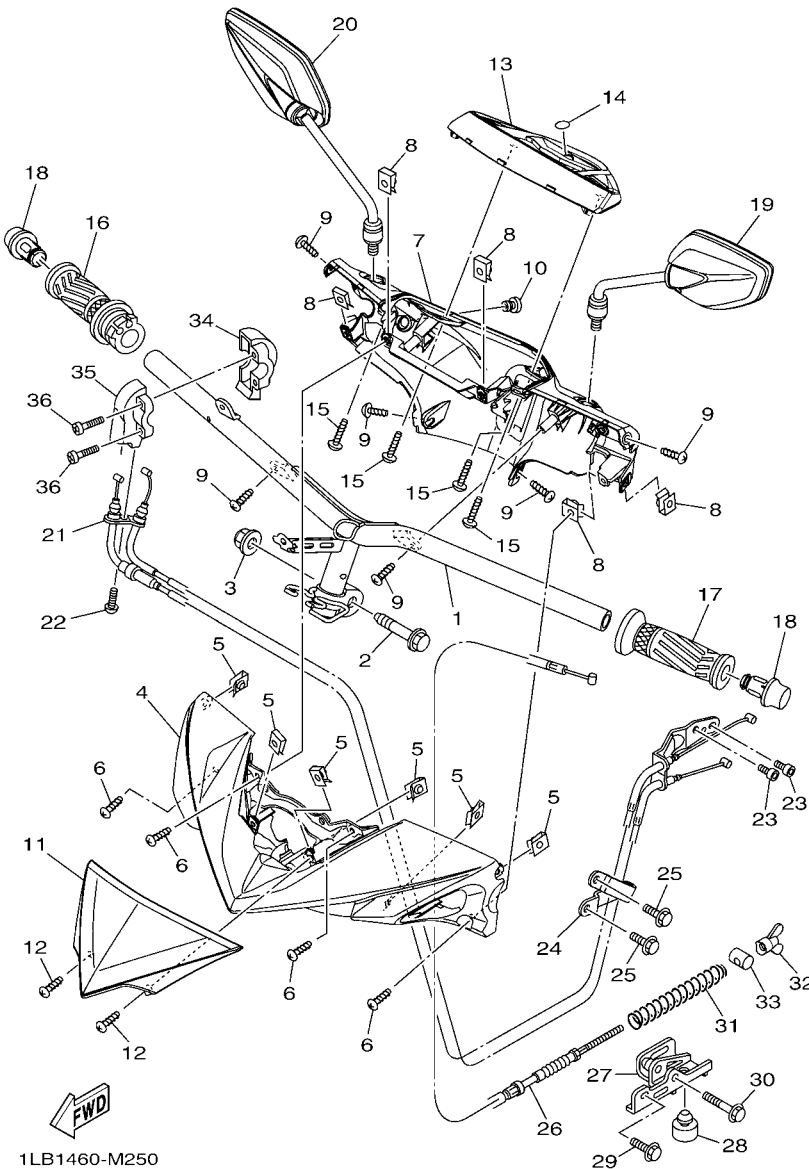


FIG. 25 STEERING HANDLE & CABLE

REF. NO.	PART NO.	DESCRIPTION	1LB1				REMARKS
1	1LB-F6110-00	HANDLE COMP.	1				
2	90105-10036	BOLT, FLANGE	1				
3	90185-10815	NUT, SELF-LOCKING	1				
4	1LB-F6143-00-P1	COVER, HANDLE UPPER 1	1				UR FOR WM6
	1LB-F6143-00-P0	COVER, HANDLE UPPER 1	1				UR FOR SMX
	1LB-F6143-00-P2	COVER, HANDLE UPPER 1	1				UR FOR RM7
	1LB-F6143-00-P4	COVER, HANDLE UPPER 1	1				UR FOR VPBC5
	1LB-F6143-00-P3	COVER, HANDLE UPPER 1	1				UR FOR DBPM3
5	90183-05807	NUT, SPRING	6				
6	97707-50014	SCREW, TRUSS HEAD TAPPING	4				
7	1LB-F6145-00	COVER, HAND UPPER 2	1				
8	90183-05807	NUT, SPRING	5				
9	97707-50014	SCREW, TRUSS HEAD TAPPING	6				
10	4US-F6199-00	PLUG, BLIND	1				
11	1LB-F61AA-00-P1	VISOR	1				UR SMX
	1LB-F61AA-00-P0	VISOR	1				UR RYC1
	1LB-F61AA-00-P2	VISOR	1				UR WM6
12	97707-50014	SCREW, TRUSS HEAD TAPPING	2				
13	44D-H3559-00-7B	COVER, METER	1				BIB2
14	44D-F3108-00	EMBLEM	1				
15	97702-50020	SCREW, TAPPING	4				
16	44D-F6240-00	GRIP ASSY	1				
17	44D-F6241-00	GRIP	1				
18	54P-F6246-00	END, GRIP	2				
19	1LB-F6280-00	REAR VIEW MIRROR ASSY (LEFT)	1				
20	1LB-F6290-00	REAR VIEW MIRROR ASSY (RIGHT)	1				
21	1LB-F6301-00	THROTTLE CABLE ASSY	1				

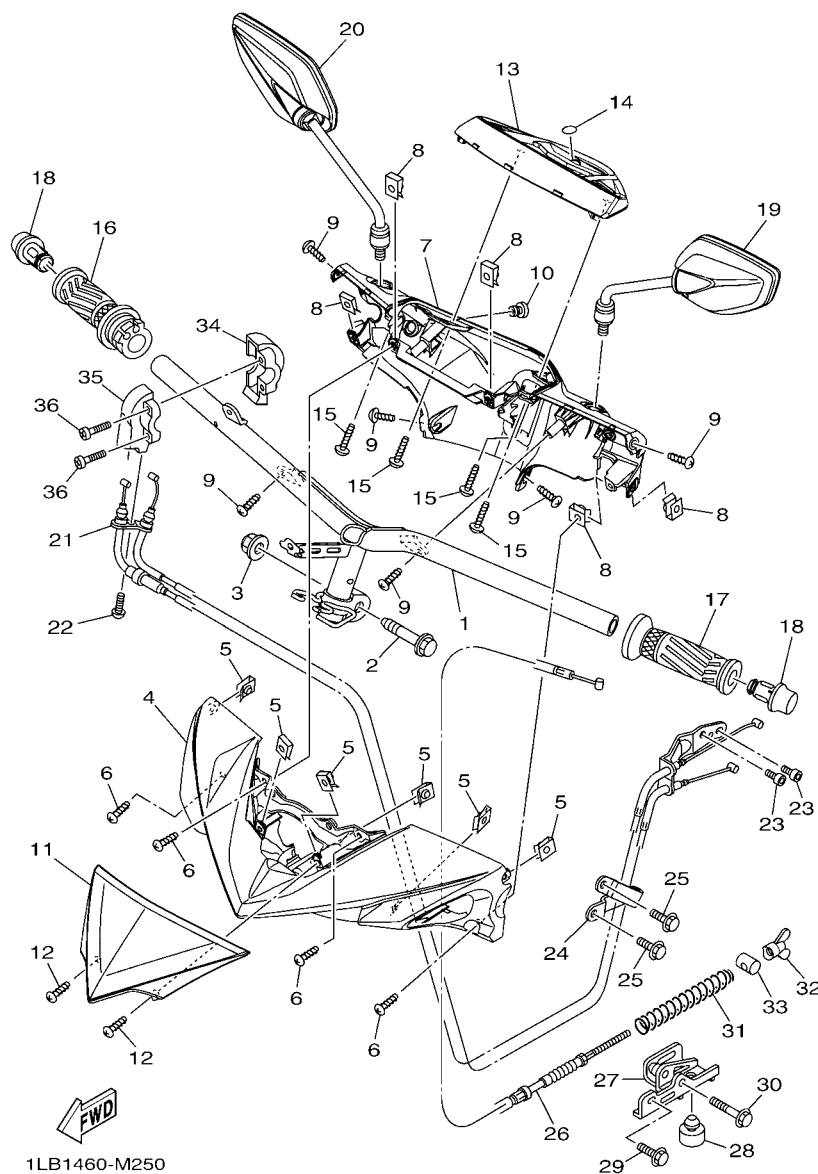


FIG. 25 STEERING HANDLE & CABLE

[illegible]

[illegible]

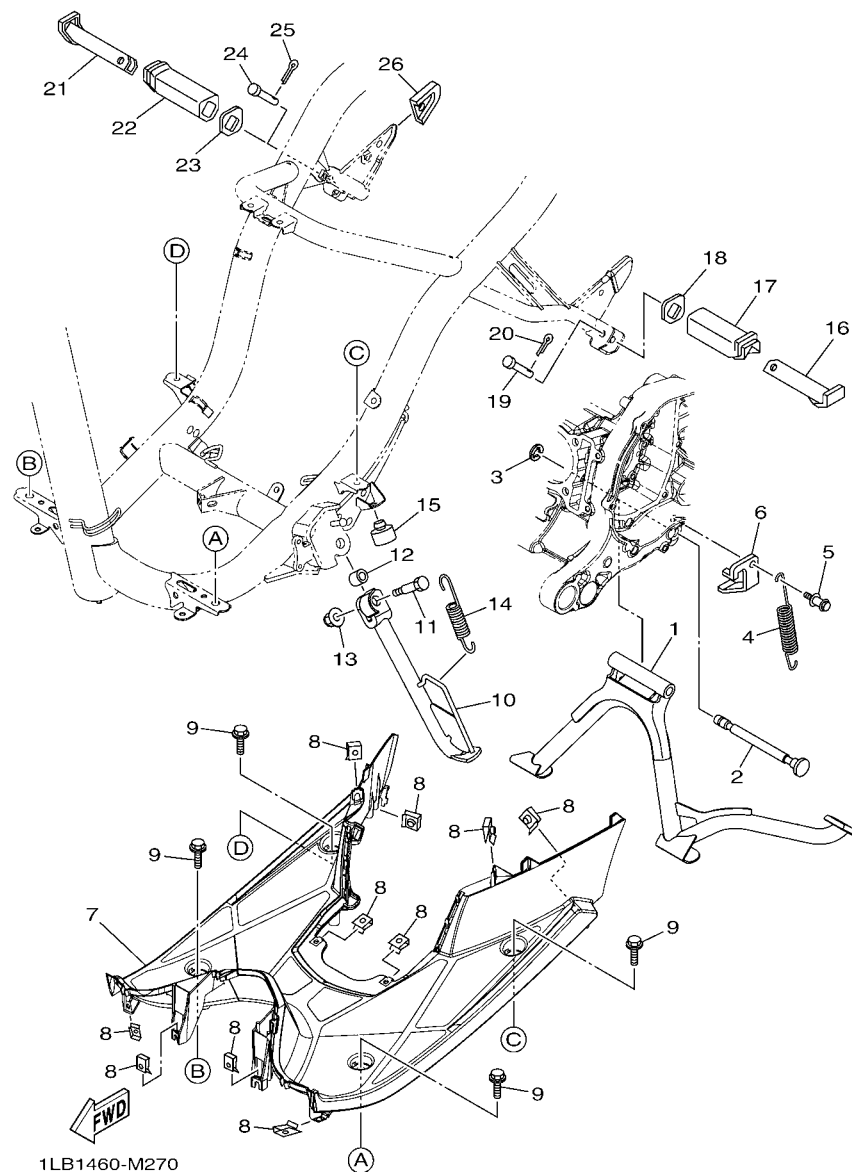


FIG. 27 STAND & FOOTREST

REF. NO.	PART NO.	DESCRIPTION	1LB1				REMARKS
1	1LB-F7111-00	STAND, MAIN	1				
2	44D-F7112-00	SHAFT, MAIN STAND	1				
3	99001-08600	CIRCLIP	1				
4	90506-35816	SPRING, TENSION	1				
5	1LB-F7254-00	HOOK	1				
6	44D-F7267-01	GUIDE, WIRE	1				
7	44D-F7481-00	BOARD, FOOTREST	1				
8	90183-05807	NUT, SPRING	10				
9	90119-06044	BOLT, WITH WASHER	4				
10	1LB-F7311-00	STAND, SIDE	1				
11	90101-08847	BOLT	1				
12	90387-08820	COLLAR	1				
13	95602-08200	NUT, SELF-LOCKING	1				
14	40D-F7116-00	SPRING, MAIN STAND	1				
15	4YY-F7114-00	STOPPER, MAIN STAND	1				
16	5LM-F7431-00	FOOTREST, REAR 1	1				
17	5LM-F7433-00	COVER, REAR FOOTREST	1				
18	5LM-F7445-00	PLATE 1	1				
19	90240-08144	PIN, CLEVIS	1				
20	91401-25015	PIN, COTTER	1				
21	5LM-F7441-00	FOOTREST, REAR 2	1				
22	5LM-F7444-00	COVER, REAR FOOTREST	1				
23	5LM-F7445-00	PLATE 1	1				
24	90240-08144	PIN, CLEVIS	1				
25	91401-25015	PIN, COTTER	1				
26	44D-F7491-00	PROTECTOR	1				

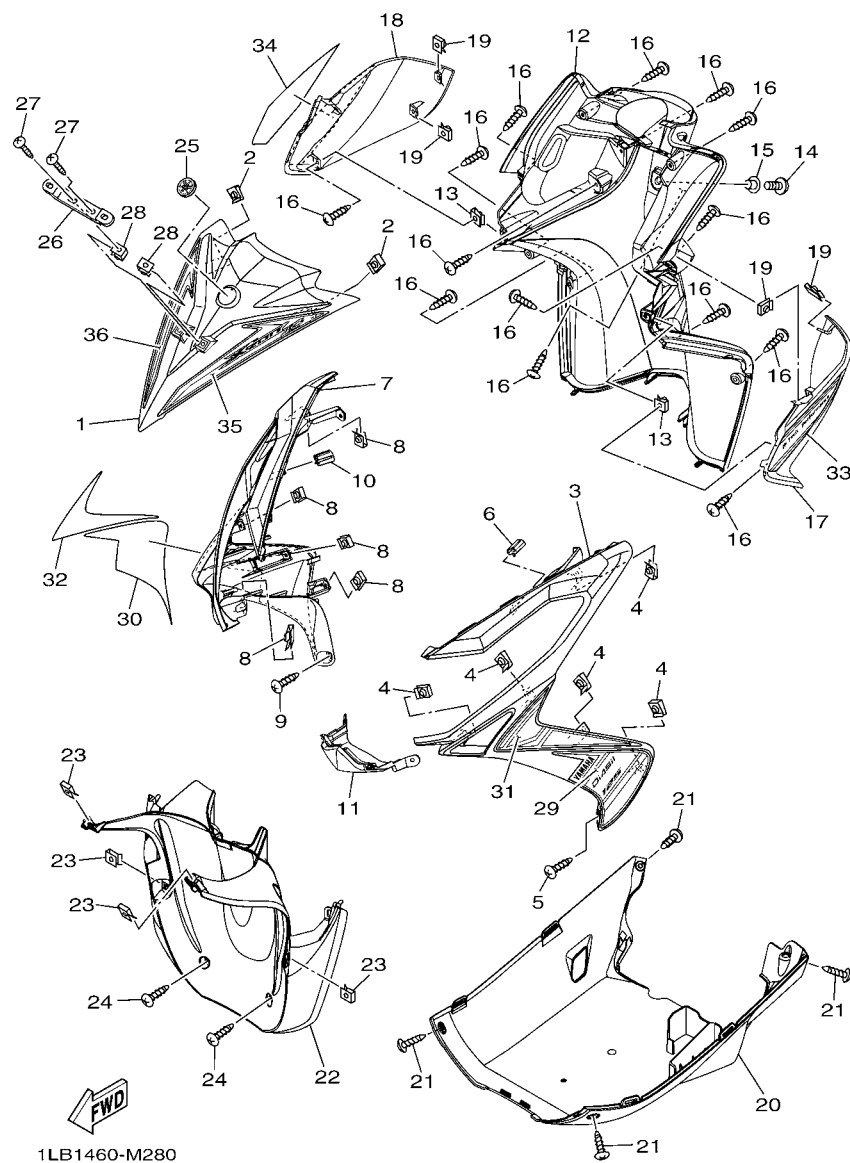


FIG. 28 LEG SHIELD

REF. NO.	PART NO.	DESCRIPTION	1LB1				REMARKS
1	1LB-F3391-00-P1	PANEL, FRONT	1				UR SMX
	1LB-F3391-00-P0	PANEL, FRONT	1				UR RYC1
	1LB-F3391-00-P2	PANEL, FRONT	1				UR WM6
2	90183-05807	NUT, SPRING	2				
3	1LB-F835U-00-P1	PANEL 1	1				UR FOR WM6
	1LB-F835U-00-P0	PANEL 1	1				UR FOR SMX
	1LB-F835U-00-P2	PANEL 1	1				UR FOR RM7
	1LB-F835U-00-P4	PANEL 1	1				UR FOR VPBC5
	1LB-F835U-00-P3	PANEL 1	1				UR FOR DBPM3
4	90183-05807	NUT, SPRING	5				
5	97707-50014	SCREW, TRUSS HEAD TAPPING	1				
6	1LB-F6329-00	CAP, RUBBER	1				
7	1LB-F835V-00-P1	PANEL 2	1				UR FOR WM6
	1LB-F835V-00-P0	PANEL 2	1				UR FOR SMX
	1LB-F835V-00-P2	PANEL 2	1				UR FOR RM7
	1LB-F835V-00-P4	PANEL 2	1				UR FOR VPBC5
	1LB-F835V-00-P3	PANEL 2	1				UR FOR DBPM3
8	90183-05807	NUT, SPRING	5				
9	97707-50014	SCREW, TRUSS HEAD TAPPING	1				
10	1LB-F6329-00	CAP, RUBBER	1				
11	1LB-F3397-00-P1	PANEL, FRONT 2	1				UR FOR WM6
	1LB-F3397-00-P0	PANEL, FRONT 2	1				UR FOR SMX
	1LB-F3397-00-P2	PANEL, FRONT 2	1				UR FOR RM7
	1LB-F3397-00-P4	PANEL, FRONT 2	1				UR FOR VPBC5
	1LB-F3397-00-P3	PANEL, FRONT 2	1				UR FOR DBPM3
12	44D-F8312-00	LEG SHIELD 2	1				
13	90183-05807	NUT, SPRING	2				

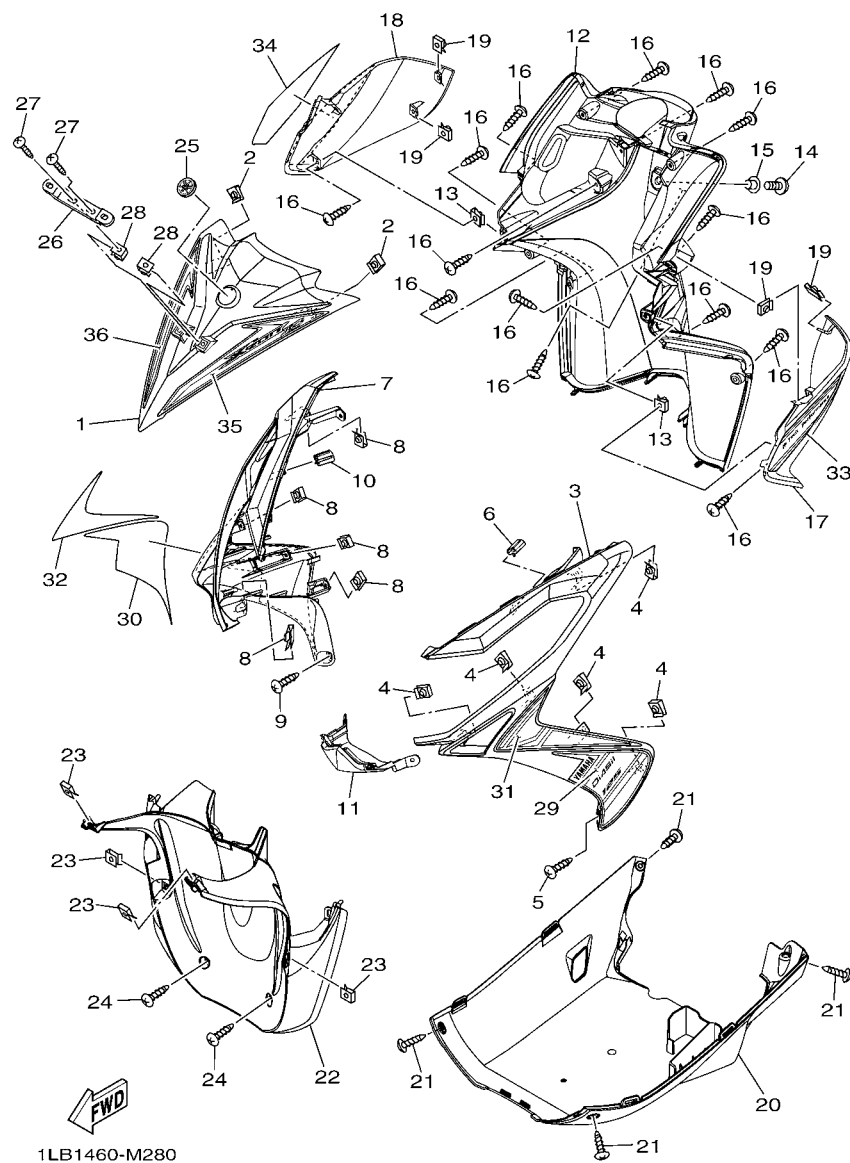


FIG. 28 LEG SHIELD

REF. NO.	PART NO.	DESCRIPTION	1LB1				REMARKS
14	90111-06839	BOLT, HEX. SOCKET BUTTON	1				
15	90387-07811	COLLAR	1				
16	97707-50014	SCREW, TRUSS HEAD TAPPING	14				
17	44D-F836K-00-P7	PANEL, INNER 1	1				UR VOM2
	44D-F836K-00-P5	PANEL, INNER 1	1				UR SMX
	44D-F836K-00-P4	PANEL, INNER 1	1				UR WM6
18	44D-F836L-00-P7	PANEL, INNER 2	1				UR VOM2
	44D-F836L-00-P5	PANEL, INNER 2	1				UR SMX
	44D-F836L-00-P4	PANEL, INNER 2	1				UR WM6
19	90183-05807	NUT, SPRING	4				
20	1LB-F8385-00	COVER, UNDER	1				WM6
	1LB-F8385-10	COVER, UNDER	1				SMX
	1LB-F8385-20	COVER, UNDER	1				RM7, VPBC5, DBPM3
21	97707-50014	SCREW, TRUSS HEAD TAPPING	4				
22	1LB-F1552-00	FENDER, INNER	1				WM6
	1LB-F1552-10	FENDER, INNER	1				SMX
	1LB-F1552-20	FENDER, INNER	1				RM7, VPBC5, DBPM3
23	90183-05807	NUT, SPRING	4				
24	97707-50014	SCREW, TRUSS HEAD TAPPING	2				
25	5TL-F3108-00	EMBLEM	1				
26	5TP-H454E-01	BRACKET, NUMBER PLATE	1				
27	97707-50014	SCREW, TRUSS HEAD TAPPING	2				
28	90183-05807	NUT, SPRING	2				
29	1LB-F8391-00	GRAPHIC 1	1				UR FOR WM6
	1LB-F8391-10	GRAPHIC 1	1				UR FOR SMX
	1LB-F8391-20	GRAPHIC 1	1				UR FOR RM7
	1LB-F8391-30	GRAPHIC 1	1				UR FOR VPBC5

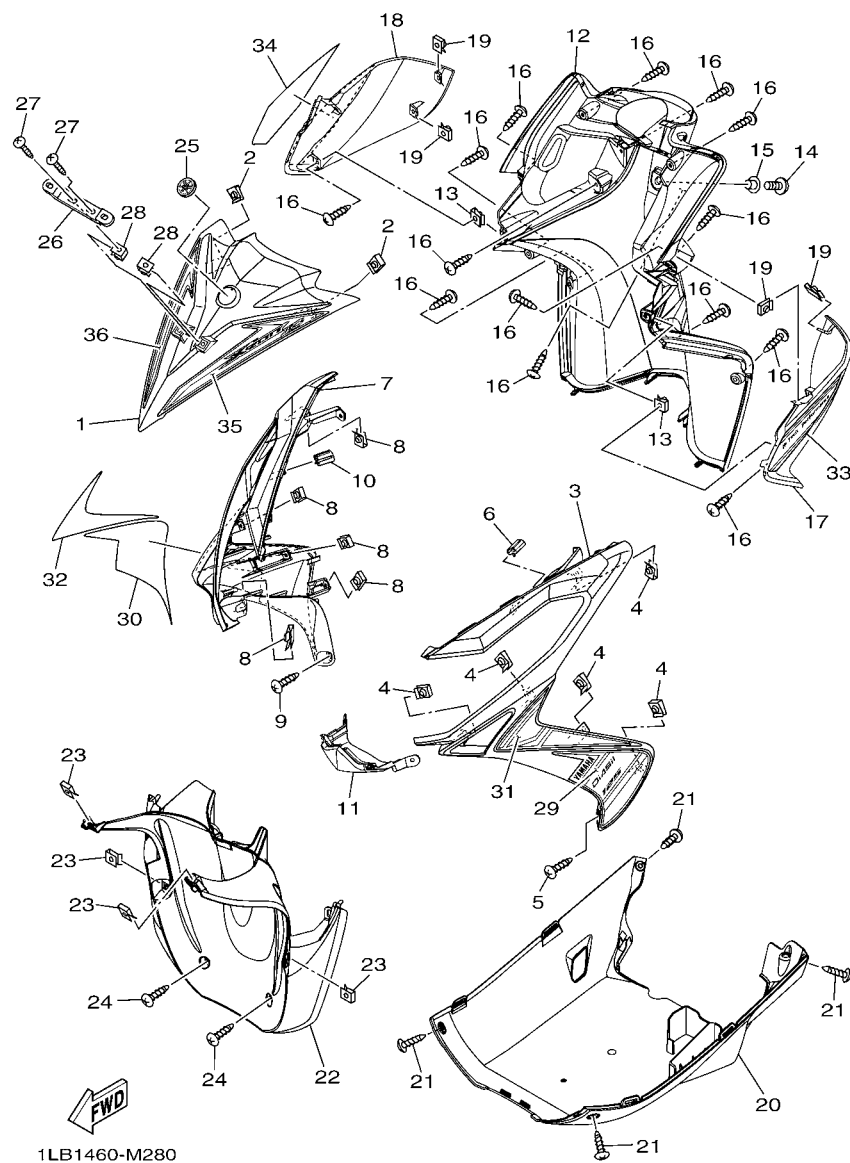


FIG. 28 LEG SHIELD

REF. NO.	PART NO.	DESCRIPTION	1LB1				REMARKS
29	1LB-F8391-40	GRAPHIC 1	1				UR FOR DBPM3
30	1LB-F8392-00	GRAPHIC 2	1				UR FOR WM6
	1LB-F8392-10	GRAPHIC 2	1				UR FOR SMX
	1LB-F8392-20	GRAPHIC 2	1				UR FOR RM7
	1LB-F8392-30	GRAPHIC 2	1				UR FOR VPBC5
	1LB-F8392-40	GRAPHIC 2	1				UR FOR DBPM3
31	1LB-F8393-00	GRAPHIC 3	1				UR FOR WM6
	1LB-F8393-10	GRAPHIC 3	1				UR FOR SMX
	1LB-F8393-20	GRAPHIC 3	1				UR FOR RM7
	1LB-F8393-30	GRAPHIC 3	1				UR FOR VPBC5
	1LB-F8393-40	GRAPHIC 3	1				UR FOR DBPM3
32	1LB-F8394-00	GRAPHIC 4	1				UR FOR WM6
	1LB-F8394-10	GRAPHIC 4	1				UR FOR SMX
	1LB-F8394-20	GRAPHIC 4	1				UR FOR RM7
	1LB-F8394-30	GRAPHIC 4	1				UR FOR VPBC5
	1LB-F8394-40	GRAPHIC 4	1				UR FOR DBPM3
33	1LB-F8398-00	GRAPHIC 5	1				UR FOR WM6
	1LB-F8398-10	GRAPHIC 5	1				UR FOR SMX
	1LB-F8398-20	GRAPHIC 5	1				UR FOR RM7
	1LB-F8398-30	GRAPHIC 5	1				UR FOR VPBC5
	1LB-F8398-40	GRAPHIC 5	1				UR FOR DBPM3
34	1LB-F8399-00	GRAPHIC 6	1				UR FOR WM6
	1LB-F8399-10	GRAPHIC 6	1				UR FOR SMX
	1LB-F8399-20	GRAPHIC 6	1				UR FOR RM7
	1LB-F8399-30	GRAPHIC 6	1				UR FOR VPBC5
	1LB-F8399-40	GRAPHIC 6	1				UR FOR DBPM3
35	1LB-F339E-00	GRAPHIC 1	1				UR FOR WM6

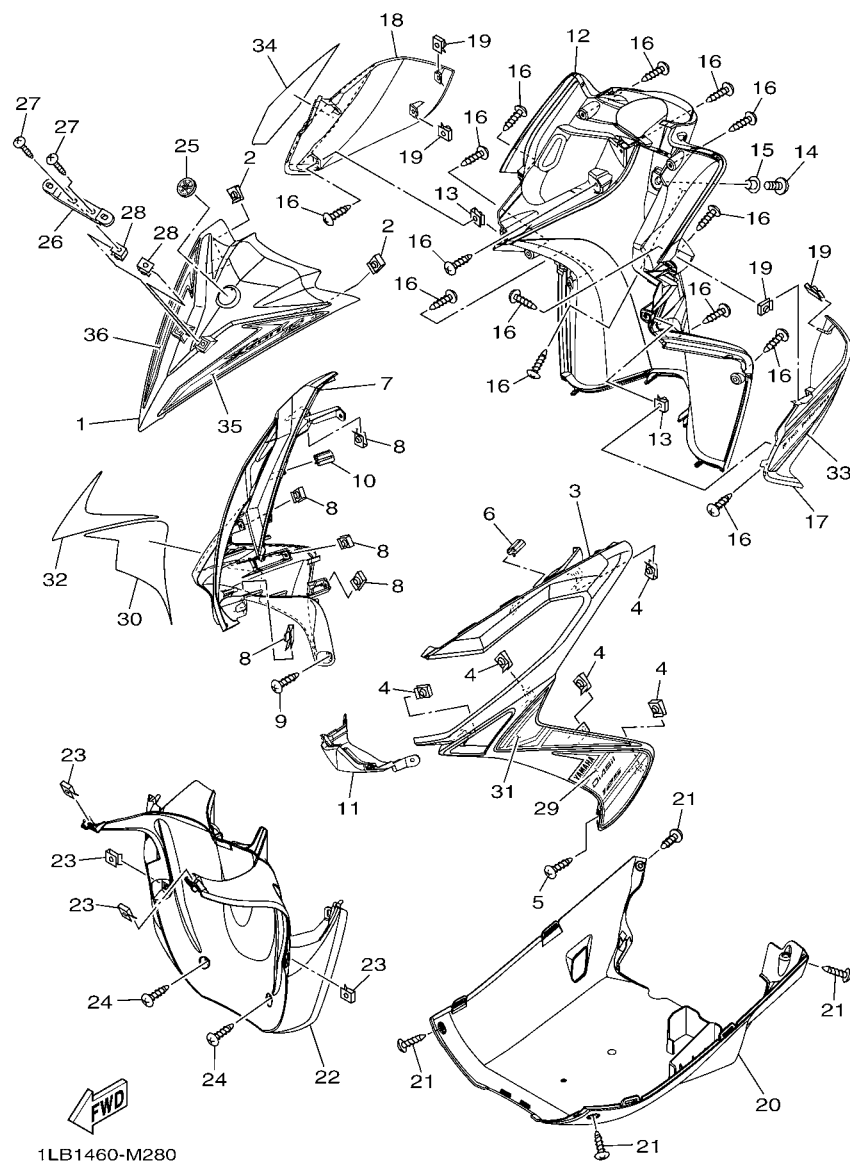


FIG. 28 LEG SHIELD

[illegible]

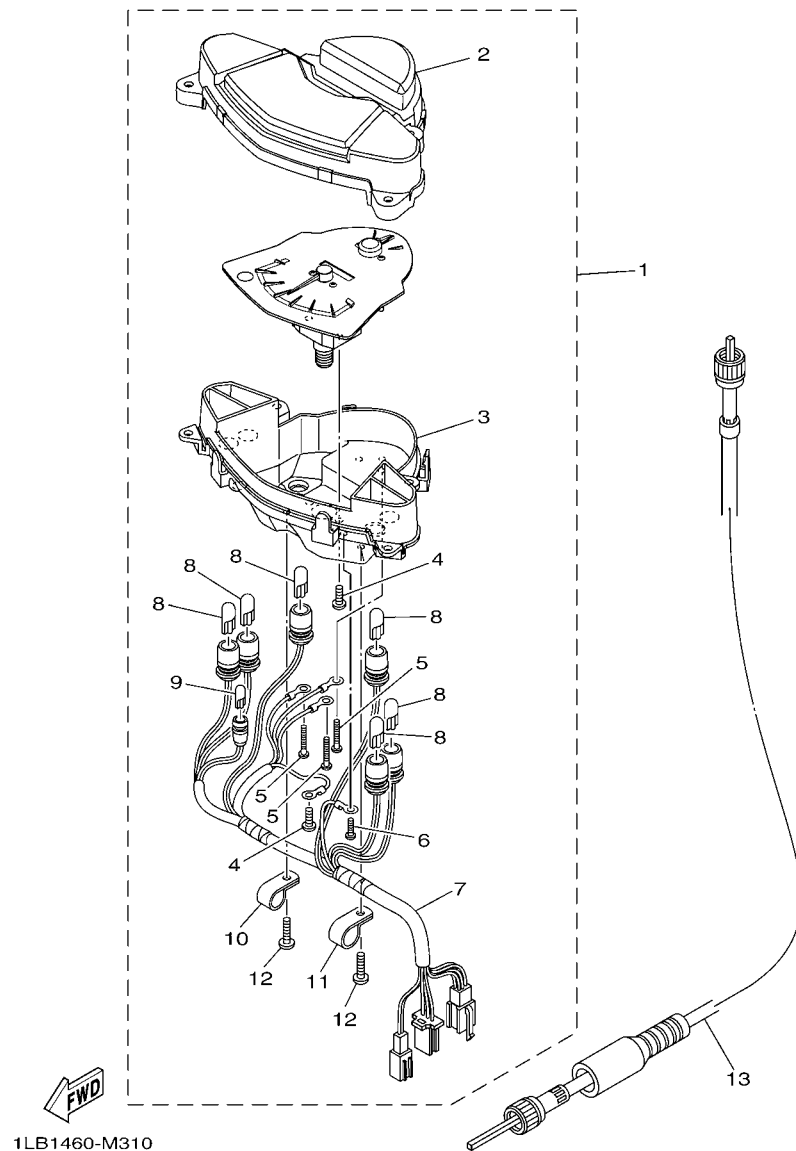


FIG. 31 METER

[illegible]

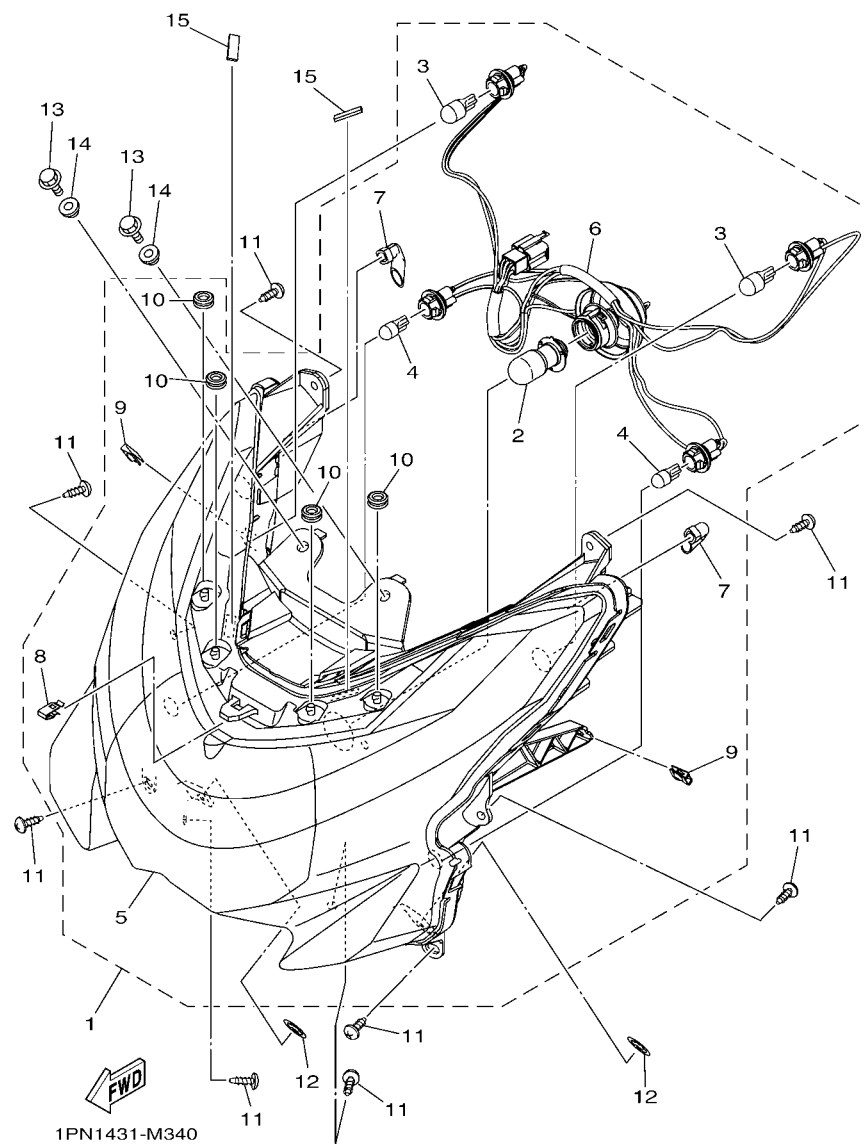


FIG. 32 HEADLIGHT

[illegible]

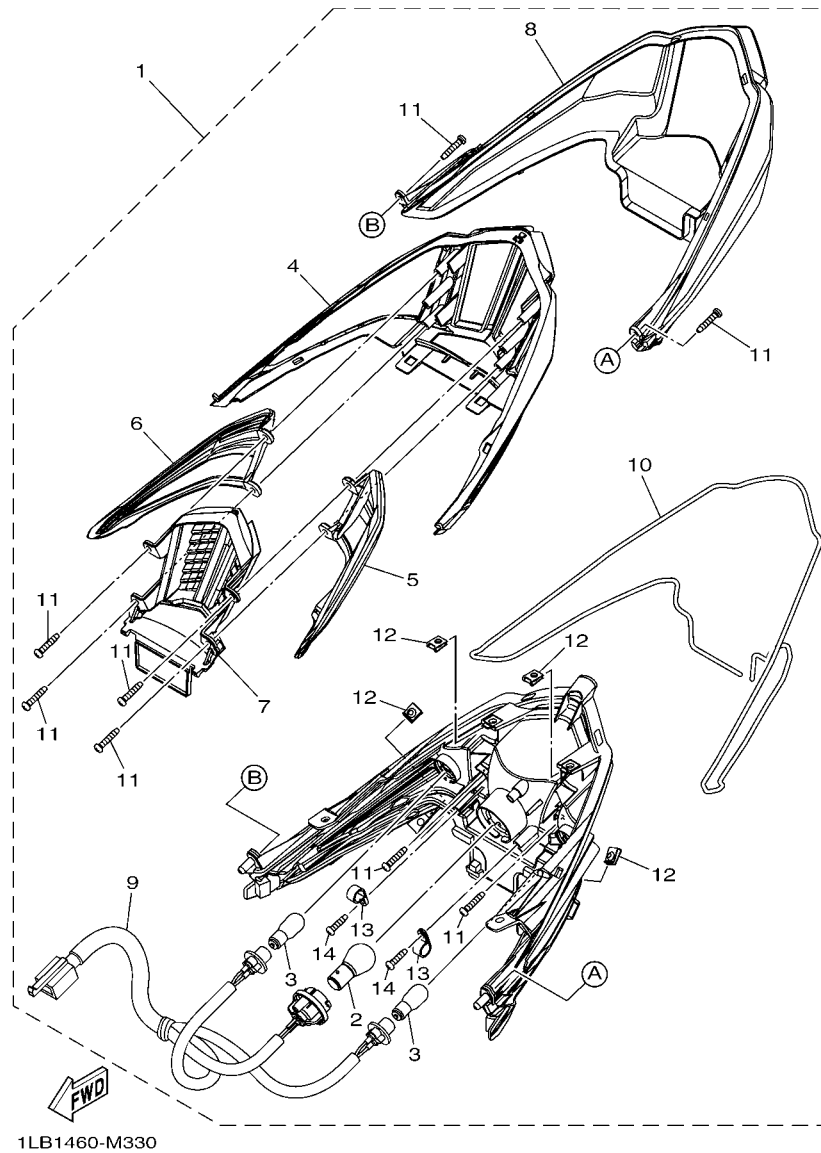
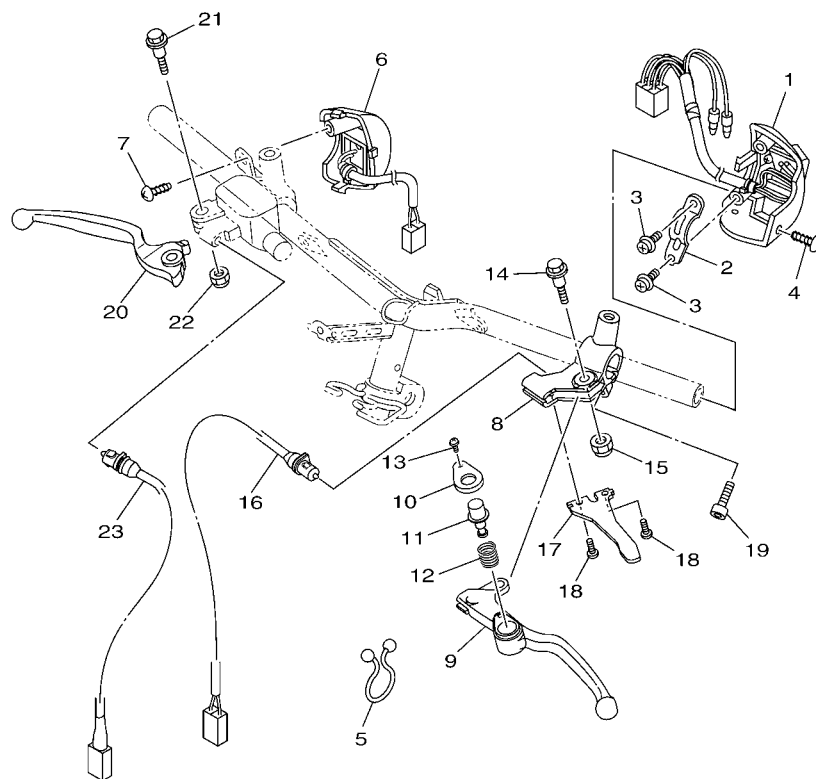


FIG. 33 TAILLIGHT



1LB1460-M340

FIG. 34 HANDLE SWITCH & LEVER

REF. NO.	PART NO.	DESCRIPTION	1LB1				REMARKS
1	44D-H3973-00	SWITCH, HANDLE 3	1				
2	1LB-H3955-00	BRACKET 1	1				
3	97607-05216	SCREW,WITH WASHER	2				
4	97707-50014	SCREW, TRUSS HEAD TAPPING	1				
5	90464-23811	CLAMP	2				
6	44D-H3976-00	SWITCH, HANDLE 1	1				
7	97702-50020	SCREW, TAPPING	1				
8	1LB-H2911-00	HOLDER, LEVER 1	1				
9	1LB-H3912-00	LEVER 1	1				
10	1LB-H3935-00	COVER	1				
11	1LB-H3967-00	PIN, LOCK 1	1				
12	40D-H3962-00	SPRING	1				
13	40D-H396X-00	SCREW, LEVER FITTING	1				
14	90109-06798	BOLT	1				
15	95602-06100	NUT, U	1				
16	1LB-H3980-00	FRONT STOP SWITCH ASSY	1				
17	1LB-H2556-00	DAMPER, STOPPER	1				
18	98502-05010	SCREW, PAN HEAD	2				
19	91312-06020	BOLT	1				
20	5TL-H3922-00	LEVER 2	1				
21	90109-06577	BOLT	1				
22	95602-06100	NUT, U	1				
23	44D-H3980-00	FRONT STOP SWITCH ASSY	1				

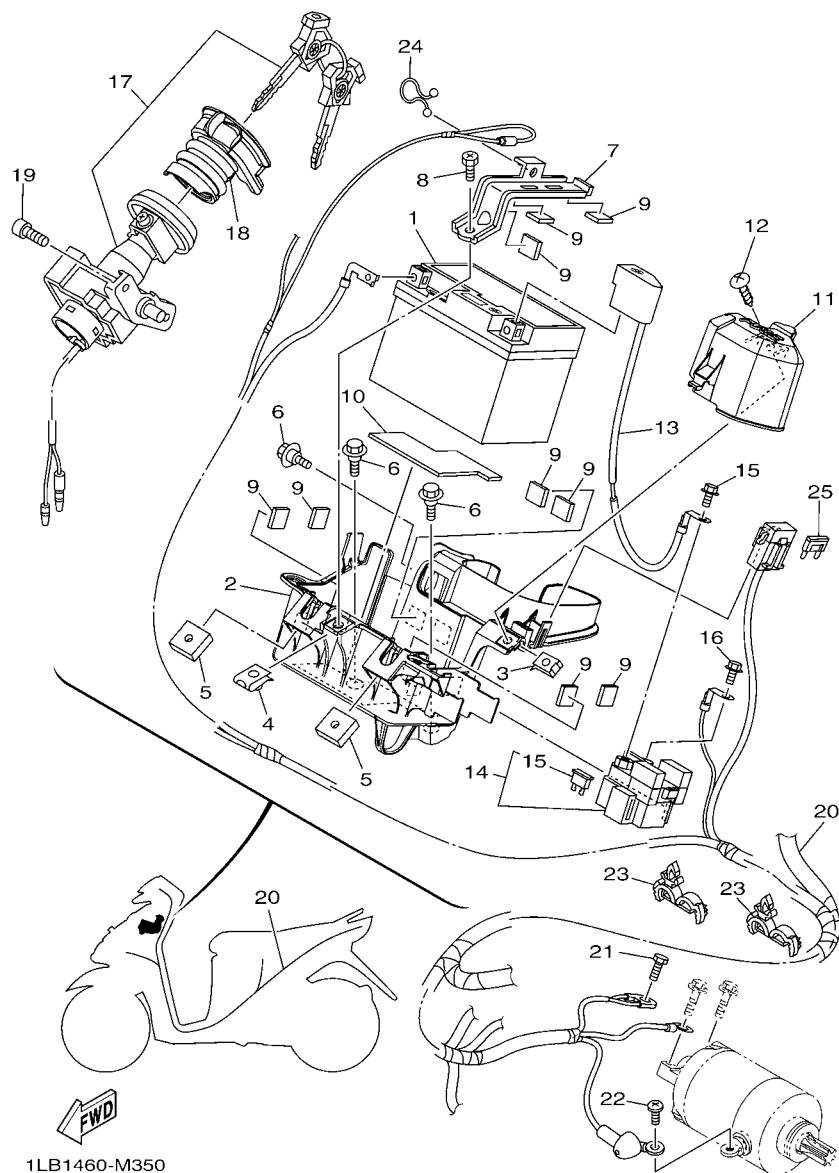


FIG. 35 ELECTRICAL 1

REF. NO.	PART NO.	DESCRIPTION	1LB1				REMARKS
1	3C1-H2100-00	BATTERY ASSY (YTZ5S MF YUASA)	1				
2	1LB-H212B-00	BOX, BATTERY 1	1				
3	90183-05807	NUT, SPRING	1				
4	90183-06821	NUT, SPRING	1				
5	90173-06806	NUT, SQUARE	2				
6	90109-06887	BOLT	3				
7	1LB-H2136-00	PLATE, BATTERY FITTING	1				
8	90153-06807	SCREW, HEXAGON	1				
9	90520-03801	DAMPER, PLATE	9				
10	44D-H2176-00	DAMPER	1				
11	1LB-H234W-00	COVER, CAP	1				
12	97707-50014	SCREW, TRUSS HEAD TAPPING	1				
13	44D-H2115-00	WIRE, PLUS LEAD	1				
14	1LB-H1940-00	STARTER RELAY ASSY	1				
15	54P-H2151-00	.FUSE (15A)	2				
16	95022-06008	BOLT, FLANGE	2				
17	1KP-H252E-00	MAIN SWITCH COMP.	1				
18	44D-H2568-00	COVER, MAIN SWITCH	1				
19	91312-06014	BOLT	2				
20	1LB-H2590-00	WIRE HARNESS ASSY	1				
21	97002-06012	BOLT	1				
22	91312-05008	BOLT	1				
23	90464-18246	CLAMP	2				
24	90464-15804	CLAMP	1				
25	1LB-H2151-00	FUSE (10A)	1				

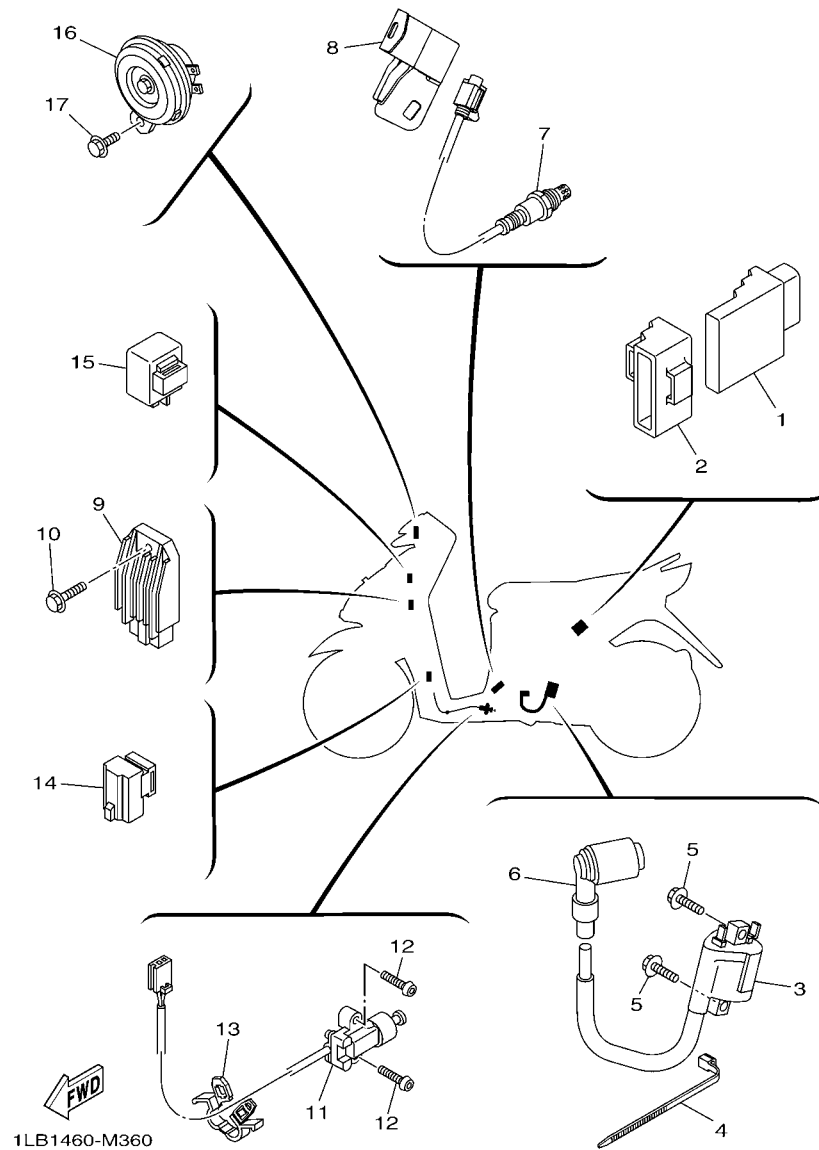


FIG. 36 ELECTRICAL 2

REF. NO.	PART NO.	DESCRIPTION	1LB1				REMARKS
1	1LB-H591A-00	ENGINE CONTROL UNIT ASSY	1				
2	1LB-H5546-00	BAND	1				
3	1LB-H2310-00	IGNITION COIL ASSY	1				
4	90464-13073	CLAMP	1				
5	97022-06020	BOLT, HEXAGON	2				
6	1LB-H2370-00	PLUG CAP ASSY	1				
7	1DY-H592A-00	SENSOR, OXYGEN	1				
8	1LB-H252U-00	COVER	1				
9	54P-H1960-00	RECTIFIER & REGULATOR ASSY	1				
10	95022-06020	BOLT, FLANGE	1				
11	1LB-H2566-00	SWITCH, SIDE STAND	1				
12	90111-05810	BOLT,HEX. SOCKET BUTTON	2				
13	90464-07805	CLAMP	1				
14	3D9-81950-00	RELAY ASSY (3D9-00)	1				
15	5D9-H3350-00	FLASHER RELAY ASSY	1				
16	40D-H3371-00	HORN	1				
17	95022-06010	BOLT, FLANGE	1				
-	-	-	-	-	-	-	-
-	-	-	-	-	-	-	-
-	-	-	-	-	-	-	-

NUMERICAL INDEX

PART NO.	REF. NO.	PART NO.	REF. NO.	PART NO.	REF. NO.	PART NO.	REF. NO.	PART NO.	REF. NO.	PART NO.	REF. NO.
52S-12410-00	6 - 1	44D-E2223-00	5 - 5	1LB-E4412-00	8 - 19	44D-E5512-00	12 - 6	1LB-F1552-20	28 - 22	1LB-F174G-10	17 - 32
52S-12439-00	6 - 2	1LB-E2228-00	4 - 11	1LB-E4417-00	8 - 18	44D-E5521-00	12 - 7	44D-F1611-00	16 - 4	1LB-F174G-20	17 - 32
5LW-15659-01	11 - 6	1LB-E2231-00	4 - 7	1LB-E4422-00	8 - 8	44D-E5524-00	12 - 1	44D-F1621-00	16 - 10	1LB-F174G-30	17 - 32
5TL-2341E-10	19 - 26	44D-E2233-00	4 - 8	1LB-E4425-00	8 - 28	44D-E5570-01	12 - 4	1LB-F1652-00	16 - 8	1LB-F174G-40	17 - 32
5VC-23462-00	19 - 17	33S-E2241-00	4 - 10	1LB-E4426-00	8 - 44	44D-E5598-00	12 - 5	44D-F1711-00-P0	17 - 5	1LB-F174H-00	17 - 33
36Y-2589H-00	26 - 8	44D-E2422-00	5 - 1	1LB-E4435-00	8 - 14	44D-E5601-00	12 - 8	44D-F1711-00-P1	17 - 5	1LB-F174H-10	17 - 33
3D9-81950-00	36 - 14	44D-E2439-00	5 - 4	4ST-E443E-00	11 - 4	44D-E5620-00	12 - 14	44D-F1711-00-P3	17 - 5	1LB-F174H-20	17 - 33
2GV-83517-00	31 - 9	1LB-E2446-00	5 - 12	5TL-E443E-00	8 - 15	44D-E5630-00	12 - 16	44D-F1711-00-P4	17 - 5	1LB-F174H-30	17 - 33
4NK-8357E-00	31 - 11	44D-E2450-00	5 - 2	5TP-E443G-00	8 - 17	5MX-E5657-00	13 - 12	44D-F1711-00-P5	17 - 5	1LB-F174H-40	17 - 33
5EL-8357E-00	31 - 10	44D-E2456-00	5 - 9	1LB-E4445-00	8 - 22	5MX-E5673-00	12 - 17	44D-F171E-00-P0	17 - 21	1LB-F174J-00	17 - 34
1LB-E1102-00	1 - 1	44D-E2459-00	5 - 8	1LB-E4449-00	8 - 23	1LB-E5693-00	12 - 2	44D-F171E-00-P1	17 - 21	1LB-F174J-10	17 - 34
54P-E111F-00	4 - 3	1PN-E2460-00	6 - 7	44D-E4449-00	8 - 13	1LB-E5744-00	13 - 26	44D-F171E-00-P3	17 - 21	1LB-F174J-20	17 - 34
1LB-E111J-00	1 - 5	1LB-E2463-00	6 - 4	1LB-E4452-00	8 - 11	44D-E6111-00	14 - 10	44D-F171E-00-P4	17 - 21	1LB-F174J-30	17 - 34
33S-E1133-10	1 - 2	1LB-E2467-00	6 - 24	1LB-E4453-00	8 - 12	1LB-E6611-00	13 - 28	44D-F171E-00-P5	17 - 21	1LB-F174J-40	17 - 34
1LB-E1165-00	1 - 10	44D-E2481-01	6 - 14	44D-E4455-00	8 - 24	1LB-E6620-00	13 - 15	44D-F1721-00-P0	17 - 11	1LB-F174K-00	17 - 35
1LB-E1166-00	8 - 30	44D-E2482-01	6 - 16	1LB-E4457-00	8 - 20	1LB-E6626-00	13 - 16	44D-F1721-00-P1	17 - 11	1LB-F174K-10	17 - 35
1LB-E1169-00	1 - 11	1LB-E2483-00	6 - 18	14D-E4613-00	9 - 7	44D-E7211-00	14 - 5	44D-F1721-00-P3	17 - 11	1LB-F174K-20	17 - 35
1LB-E1173-00	1 - 14	1PN-E2572-00	8 - 39	1LB-E4711-00	9 - 1	44D-E7410-00	14 - 1	44D-F1721-00-P4	17 - 11	1LB-F174K-30	17 - 35
1PN-E1181-00	1 - 20	33S-E2590-00	6 - 8	1LB-E4718-00	9 - 2	1LB-E7421-00	14 - 4	44D-F1721-00-P5	17 - 11	1LB-F174K-40	17 - 35
1LB-E1191-00	1 - 9	44D-E2611-00	6 - 26	1LB-E4799-00	9 - 3	1LB-E7465-00	13 - 19	1LB-F172W-00	17 - 1	1LB-F177F-00	17 - 2
1LB-E1193-00	1 - 17	33S-E2615-00	6 - 9	1LB-E4877-00	8 - 25	44D-E7611-00	13 - 11	1LB-F1731-00-P0	17 - 17	44D-F1816-00	17 - 27
4YS-E1198-00	10 - 30	1LB-E2621-00	6 - 20	54P-E5113-00	10 - 26	44D-E7620-00	13 - 1	1LB-F1731-00-P1	17 - 17	44D-F1817-00	17 - 28
1LB-E1311-00	1 - 25	44D-E2659-00	6 - 28	40D-E5138-00	1 - 4	44D-E7623-00	13 - 5	1LB-F1731-00-P2	17 - 17	44D-F1871-00	17 - 24
44D-E1351-00	1 - 26	44D-E2662-00	3 - 11	1LB-E5150-00	10 - 1	44D-E7632-00	13 - 4	40D-F1737-00	17 - 23	1S7-F1875-00	17 - 26
1LB-E1400-00	2 - 1	44D-E2668-00	6 - 29	44D-E5191-00	11 - 7	44D-E7641-00	13 - 10	1LB-F173E-00	17 - 30	44D-F2141-00	15 - 5
1LB-E1422-00	2 - 5	44D-E2669-00	6 - 30	1LB-E5316-00	11 - 24	44D-E7645-00	13 - 8	1LB-F173E-10	17 - 30	1LB-F2210-00	18 - 1
54P-E1445-00	2 - 14	33S-E2843-00	6 - 10	54P-E5351-00	7 - 4	1LB-E7649-00	13 - 31	1LB-F2210-00	17 - 30	1LB-F2210-10	18 - 1
1PN-E1603-00	2 - 13	44D-E3300-00	7 - 1	1LB-E5357-00	8 - 2	44D-E7653-00	13 - 6	1LB-F173E-30	17 - 30	5MX-F2216-00	10 - 3
33S-E1631-03	2 - 10	44D-E3324-00	2 - 8	1LB-E5362-00	10 - 27	1LB-E7660-00	13 - 17	1LB-F173E-40	17 - 30	1LB-F3100-00	19 - 1
1S7-E1633-00	2 - 11	5LW-E3411-00	7 - 5	5LW-E5363-00	10 - 20	1LB-E7664-00	13 - 21	1LB-F173F-00	17 - 31	44D-F3108-00	25 - 14
33S-E1651-00	2 - 4	5LW-E3452-00	2 - 6	5LW-E5371-01	10 - 5	1LB-E7668-00	13 - 24	1LB-F173F-10	17 - 31	5TL-F3108-00	28 - 25
33S-E1681-00	2 - 2	5LW-E3475-00	7 - 2		11 - 3	1LB-E7670-00	13 - 18	1LB-F173F-20	17 - 31	1LB-F3110-00	19 - 8
54P-E2111-00	3 - 1	1LB-E3557-00	8 - 38	44D-E5373-00	10 - 6	1LB-E7683-00	13 - 22	1LB-F173F-30	17 - 31	28D-F3111-00	19 - 20
54P-E2113-00	3 - 4	1PN-E3585-00	8 - 1	44D-E5383-00	11 - 9	1LB-E7690-00	13 - 23	1LB-F173F-40	17 - 31	1LB-F3126-00	19 - 5
54P-E2117-00	3 - 6	1LB-E3750-00	8 - 5	44D-E5407-00	11 - 16	1LB-F1110-00	15 - 1	1LB-F173X-00	17 - 36	1LB-F3136-00	19 - 2
5TL-E2118-00	3 - 5	54P-E3761-00	8 - 33	14D-E5408-00	10 - 7	44D-F1161-00	19 - 36	1LB-F173X-10	17 - 36	1LB-F3141-00	19 - 15
54P-E2119-00	3 - 3	5LW-E3769-00	10 - 28	1LB-E5411-00	11 - 1	44D-F117F-00	15 - 14	1LB-F173X-20	17 - 36	5LM-F3144-00	19 - 14
1LB-E2121-00	3 - 2	1DB-E3770-00	8 - 32	1LB-E5413-00	11 - 21	1LB-F117G-00	15 - 18	1LB-F173X-30	17 - 36	3AY-F3145-00	19 - 3
1DY-E2126-00	3 - 7	1LB-E3895-00	8 - 42	44D-E5417-01	5 - 3	1LB-F1410-00	15 - 2	1LB-F173X-40	17 - 36		19 - 6
54P-E2146-00	3 - 12	1PN-E3907-00	20 - 8	44D-E5421-00	10 - 22	44D-F1459-00	15 - 4	1LB-F173Y-00	17 - 37	2JG-F3147-00	19 - 21
54P-E2151-00	3 - 8	54P-E3915-00	20 - 9	44D-E5423-00	10 - 11	44D-F1511-00-P4	16 - 1	1LB-F173Y-10	17 - 37	5HV-F3152-00	19 - 11
54P-E2151-10	3 - 8	1DB-E3938-00	8 - 36	1LB-E5451-00	11 - 2	44D-F1511-00-P5	16 - 1	1LB-F173Y-20	17 - 37	31B-F3153-00	19 - 22
33S-E2159-00	3 - 10	1LB-E3971-00	20 - 3	44D-E5461-00	10 - 23	44D-F1511-00-P7	16 - 1	1LB-F173Y-30	17 - 37	5P0-F3156-00	19 - 4
1LB-E2170-00	4 - 1	54P-E4137-00	8 - 37	44D-E5471-00	11 - 17	44D-F1511-00-P8	16 - 1	1LB-F173Y-40	17 - 37		19 - 7
1LB-E2176-00	4 - 5	54P-E4147-00	8 - 34	44D-E5472-00	11 - 19	44D-F1511-00-P9	16 - 1	1LB-F1741-00-P0	17 - 19	2JG-F3157-00	19 - 10
44D-E2210-00	4 - 12	5CA-E4147-00	8 - 35	44D-E5473-00	11 - 22	4ST-F1518-00	16 - 3	1LB-F1741-00-P1	17 - 19	509-F3158-L0	19 - 12
1DY-E2213-00	4 - 14	1LB-E4409-00	8 - 27	33S-E5484-00	11 - 23	1LB-F1552-00	28 - 22	1LB-F1741-00-P2	17 - 19	44D-F3170-00	19 - 9
5MX-E2222-00	4 - 13	1LB-E4411-00	8 - 7	44D-E5495-00	11 - 18	1LB-F1552-10	28 - 22	1LB-F174G-00	17 - 32	31B-F3181-00	19 - 13

NUMERICAL INDEX

PART NO.	REF. NO.	PART NO.	REF. NO.	PART NO.	REF. NO.	PART NO.	REF. NO.	PART NO.	REF. NO.	PART NO.	REF. NO.
1LB-F3340-00	19 - 16	44D-F4773-00-P9	21 - 21	44D-F6240-00	25 - 16	44D-F836L-00-P5	28 - 18	1LB-H2136-00	35 - 7	4AC-H4714-00	33 - 2
4D0-F3346-00	19 - 19	40D-F4780-01	21 - 18	44D-F6241-00	25 - 17	44D-F836L-00-P7	28 - 18	1LB-H2151-00	35 - 25	1LB-H4716-00	33 - 4
1LB-F3391-00-P0	28 - 1	44D-F478E-01	21 - 15	54P-F6246-00	25 - 18	44D-F8379-00	32 - 8	54P-H2151-00	35 - 15	1LB-H4721-00	33 - 7
1LB-F3391-00-P1	28 - 1	5TL-F5168-00-0X	22 - 1	1LB-F6279-00	25 - 24	1LB-F8385-00	28 - 20	44D-H2176-00	35 - 10	44D-H4723-00	33 - 10
1LB-F3391-00-P2	28 - 1	5TL-F5168-00-1X	22 - 1	1LB-F6280-00	25 - 19	1LB-F8385-10	28 - 20	44D-H2310-00	36 - 3	44D-H4735-00	33 - 9
1LB-F3397-00-P0	28 - 11	5TL-F5168-00-2X	22 - 1	44D-F6281-00	25 - 34	1LB-F8385-20	28 - 20	1LB-H234W-00	35 - 11	44D-H4743-00	33 - 8
1LB-F3397-00-P1	28 - 11	5TL-F5168-00-3X	22 - 1	44D-F6282-00	25 - 35	1LB-F8391-00	28 - 29	1LB-H2370-00	36 - 6	50C-H4759-00	32 - 10
1LB-F3397-00-P2	28 - 11	3AY-F5181-01	22 - 8	1LB-F6290-00	25 - 20	1LB-F8391-10	28 - 29	1KP-H252E-00	35 - 17	1LB-H5546-00	36 - 2
1LB-F3397-00-P3	28 - 11	5TL-F5190-01	22 - 11	1LB-F6301-00	25 - 21	1LB-F8391-20	28 - 29	1LB-H252U-00	36 - 8	1PN-H5752-00	20 - 10
1LB-F3397-00-P4	28 - 11	1LB-F530K-00	24 - 7	1LB-F6329-00	28 - 6	1LB-F8391-30	28 - 29	1LB-H2556-00	34 - 17	1LB-H591A-00	36 - 1
1LB-F339E-00	28 - 35	5LW-F5326-01	24 - 4		28 - 10	1LB-F8391-40	28 - 29	1LB-H2566-00	36 - 11	1DY-H592A-00	36 - 7
1LB-F339E-10	28 - 35	33S-F5338-00-0X	24 - 1	1LB-F6351-00	25 - 26	1LB-F8392-00	28 - 30	44D-H2568-00	35 - 18	5P0-W0041-00	26 - 5
1LB-F339E-20	28 - 35	33S-F5338-00-1X	24 - 1	44D-F637G-00	25 - 27	1LB-F8392-10	28 - 30	1LB-H2590-00	35 - 20	4C9-W0048-00	23 - 8
1LB-F339E-30	28 - 35	33S-F5338-00-2X	24 - 1	1LB-F7111-00	27 - 1	1LB-F8392-20	28 - 30	1LB-H2911-00	34 - 8	1LB-WE445-00	8 - 10
1LB-F339E-40	28 - 35	33S-F5338-00-3X	24 - 1	44D-F7112-00	27 - 2	1LB-F8392-30	28 - 30	5HV-H3311-00	33 - 3	90101-06046	24 - 14
1LB-F339F-00	28 - 36	5MX-F533A-00	24 - 12	44D-F7114-00	15 - 9	1LB-F8392-40	28 - 30	5LL-H3311-00	32 - 3	90101-08847	27 - 11
1LB-F339F-10	28 - 36	5MX-F5351-00	24 - 10	4YY-F7114-00	25 - 28	1LB-F8393-00	28 - 31	44D-H3332-10	33 - 6	90105-06894	5 - 7
1LB-F339F-20	28 - 36	44D-F5355-00	24 - 11		27 - 15	1LB-F8393-10	28 - 31	44D-H3342-10	33 - 5	90105-088E1	4 - 4
1LB-F339F-30	28 - 36	5P0-F5802-00	23 - 4	40D-F7116-00	27 - 14	1LB-F8393-20	28 - 31	5D9-H3350-00	36 - 15	90105-088E3	15 - 11
1LB-F339F-40	28 - 36	5YP-F5803-50	23 - 5	54P-F7121-00	10 - 2	1LB-F8393-30	28 - 31	40D-H3371-00	36 - 16	90105-088E8	18 - 2
54P-F3411-00	19 - 25	3C1-F5805-10	23 - 9	1LB-F7254-00	27 - 5	1LB-F8393-40	28 - 31	1LB-H3509-00	31 - 7	90105-10036	25 - 2
54P-F3412-00	19 - 24	54P-F580U-00	23 - 3	44D-F7267-01	27 - 6	1LB-F8394-00	28 - 32	1LB-H3510-00	31 - 1	90105-10283	15 - 7
1LB-F3415-00	19 - 28	5TL-F582U-30	23 - 1	1LB-F7311-00	27 - 10	1LB-F8394-10	28 - 32	1LB-H3511-00	31 - 2	90109-06577	34 - 21
3AY-F3416-00	19 - 27	5P0-F583T-03	26 - 4	5LM-F7431-00	27 - 16	1LB-F8394-20	28 - 32	2P0-H3516-00	32 - 4	90109-06798	34 - 14
1PA-F3418-00	19 - 31	5P0-F5852-00	26 - 7	5LM-F7433-00	27 - 17	1LB-F8394-30	28 - 32	1LB-H3517-00	31 - 8	90109-06887	16 - 2
5BP-F3873-01	19 - 23	5P0-F5854-00	26 - 6	44D-F7435-00	15 - 13	1LB-F8394-40	28 - 32	1LB-H353F-00	31 - 3		16 - 5
5BP-F3875-00	19 - 18	5P0-F5855-00	26 - 10	5LM-F7441-00	27 - 21	1LB-F8398-00	28 - 33	1LB-H3550-00	31 - 13		17 - 25
1LB-F4110-00	20 - 1	5TL-F5867-01	26 - 9	5LM-F7444-00	27 - 22	1LB-F8398-10	28 - 33	44D-H3559-00-7B	25 - 13		21 - 7
1LB-F414A-00	20 - 16	1LB-F5872-00	26 - 1	5LM-F7445-00	27 - 18	1LB-F8398-20	28 - 33	1LB-H3912-00	34 - 9		35 - 6
54P-F414G-00	20 - 11	1LB-F5875-00	19 - 32		27 - 23	1LB-F8398-30	28 - 33	5TL-H3922-00	34 - 20	90111-05810	36 - 12
1LB-F419A-00	20 - 4	1LB-F5876-00	19 - 34	44D-F7481-00	27 - 7	1LB-F8398-40	28 - 33	1LB-H3935-00	34 - 10	90111-06807	9 - 4
1LB-F419F-00	20 - 6	5YP-F5917-00	23 - 6	44D-F7491-00	27 - 26	1LB-F8399-00	28 - 34	1LB-H3955-00	34 - 2	90111-06839	28 - 14
1LB-F4425-00	20 - 12	5P0-F5919-00	23 - 11	44D-F8100-00	21 - 23	1LB-F8399-10	28 - 34	40D-H3962-00	34 - 12	90111-08815	23 - 2
4YY-F4610-10	20 - 14	5YP-F5924-00	23 - 12	44D-F8312-00	28 - 12	1LB-F8399-20	28 - 34	1LB-H3967-00	34 - 11	90116-08843	10 - 17
4YY-F4612-10	20 - 15	5YP-F5925-01	23 - 10	1LB-F835U-00-P0	28 - 3	1LB-F8399-30	28 - 34	40D-H396X-00	34 - 13	90119-06044	16 - 6
44D-F470F-00	21 - 2	5YP-F5937-00	23 - 7	1LB-F835U-00-P1	28 - 3	1LB-F8399-40	28 - 34	44D-H3973-00	34 - 1		27 - 9
44D-F470F-60	21 - 2	5YP-F5939-00	23 - 13	1LB-F835U-00-P2	28 - 3	1LB-H1410-00	29 - 2	44D-H3976-00	34 - 6		32 - 13
5TL-F4726-00	21 - 13	1LB-F6110-00	25 - 1	1LB-F835U-00-P3	28 - 3	1LB-H1450-00	29 - 1	1LB-H3980-00	34 - 16	90149-10804	23 - 14
5TL-F4727-00	21 - 12	1LB-F6143-00-P0	25 - 4	1LB-F835U-00-P4	28 - 3	5TL-H1801-00	30 - 2	44D-H3980-00	34 - 23	90153-06807	35 - 8
44D-F4730-00	21 - 1	1LB-F6143-00-P1	25 - 4	1LB-F835V-00-P0	28 - 7	3UH-H1828-01	30 - 4	1LB-H411V-00	32 - 7	90159-03102	31 - 5
44D-F4730-60	21 - 1	1LB-F6143-00-P2	25 - 4	1LB-F835V-00-P1	28 - 7	4FP-H182L-00	30 - 5	1LB-H4300-00	32 - 1	90159-06067	17 - 22
1LB-F473R-00	21 - 5	1LB-F6143-00-P3	25 - 4	5TL-H182M-00	28 - 7	1LB-H1890-00	30 - 1	1LB-H430A-00	32 - 5	90159-06801	17 - 18
3C1-F4741-00	21 - 3	1LB-F6143-00-P4	25 - 4	1LB-F835V-00-P2	28 - 7	1LB-H1890-00	30 - 1	1LB-H4312-00	32 - 6		17 - 20
5BP-F4741-00	21 - 4	1LB-F6145-00	25 - 7	1LB-F835V-00-P3	28 - 7	1LB-H1940-00	35 - 14	5HV-H4314-00	32 - 2	90167-04021	31 - 4
44D-F4747-00	21 - 6	4US-F6199-00	25 - 10	1LB-F835V-00-P4	28 - 7	54P-H1960-00	36 - 9	1LB-H4527-00	32 - 15	90170-05803	3 - 9
1S7-F4768-00	21 - 20	1LB-F61AA-00-P0	25 - 11	44D-F836K-00-P5	28 - 17	3C1-H2100-00	35 - 1	5TP-H454E-01	28 - 26	90170-12800	13 - 14
44D-F4773-00-P7	21 - 21	1LB-F61AA-00-P1	25 - 11	44D-F836K-00-P7	28 - 17	44D-H2115-00	35 - 13	44D-H454J-00	33 - 13	90173-06806	35 - 5
44D-F4773-00-P8	21 - 21	1LB-F61AA-00-P2	25 - 11	44D-F836L-00-P4	28 - 18	1LB-H212B-00	35 - 2	1LB-H4710-00	33 - 1	90175-06013	25 - 32

NUMERICAL INDEX

PART NO.	REF. NO.	PART NO.	REF. NO.	PART NO.	REF. NO.	PART NO.	REF. NO.	PART NO.	REF. NO.	PART NO.	REF. NO.
90179-08518	1 - 18	90380-23800	13 - 2	90520-10803	6 - 31	93211-44801	10 - 13	95022-06030	25 - 30	97707-50012	17 - 15
90179-10803	13 - 30	90387-058M9	17 - 10	90520-10804	6 - 32	93306-002YE	4 - 2	95022-06035	6 - 23	97707-50014	16 - 7
90179-12004	29 - 6		17 - 16	90520-20803	16 - 9	93306-082Y2	13 - 29		10 - 16		17 - 4
90179-25810	19 - 29	90387-068G3	21 - 10	90560-10292	22 - 2	93306-082Y5	13 - 29		10 - 25		17 - 8
90183-04005	17 - 7	90387-07023	32 - 14	91312-05008	25 - 23	93306-252XB	14 - 11	95022-06060	5 - 20		17 - 14
	17 - 13	90387-07811	28 - 15		35 - 22	93306-272X2	14 - 6		10 - 9		25 - 6
90183-05807	17 - 6	90387-08820	27 - 12	91312-05010	20 - 13	93306-300YK	22 - 4	95022-06070	5 - 17		25 - 9
	17 - 12	90387-08821	15 - 10	91312-05014	20 - 5	93306-301XT	14 - 2	95022-06100	10 - 10		25 - 12
	21 - 11	90387-08823	6 - 11		20 - 7	93306-301YS	14 - 3	95027-06020	6 - 25		28 - 5
	25 - 5	90387-10837	22 - 7	91312-06012	4 - 9	93306-302YF	14 - 2	95027-06035	11 - 12		28 - 9
	25 - 8	90387-16815	13 - 7	91312-06014	35 - 19	93306-303YE	14 - 12	95027-06045	11 - 13		28 - 16
	27 - 8	90388-10800	15 - 3	91312-06020	29 - 3	93306-303YJ	14 - 12	95027-06080	11 - 15		28 - 21
	28 - 2	90388-10808	10 - 4		34 - 19	93306-372X0	2 - 7	95302-10600	18 - 3		28 - 24
	28 - 4	90401-10812	26 - 2	91312-06025	26 - 11	93306-372Y4	2 - 7	95602-06100	34 - 15		28 - 27
	28 - 8	90430-06014	1 - 7	91312-06095	1 - 23	93306-901Y6	13 - 25		34 - 22		32 - 11
	28 - 13		1 - 28	91317-06025	12 - 15	93310-628X8	2 - 3	95602-08200	15 - 12		34 - 4
	28 - 19	90430-08119	10 - 19	91401-25015	27 - 20	93317-417Y2	13 - 27		27 - 13		35 - 12
	28 - 23	90450-46803	8 - 6		27 - 25	93450-16115	2 - 12	95602-10200	15 - 6	98502-05010	21 - 16
	28 - 28	90464-07805	36 - 13	91809-14804	1 - 15	93450-32837	12 - 3		15 - 8		34 - 18
	32 - 9	90464-13073	6 - 6	91810-14809	1 - 21	93603-10800	5 - 6	95612-08618	1 - 8	98502-05025	25 - 36
	33 - 12		36 - 4		1 - 22	93603-17800	5 - 10	95702-06500	21 - 14	98502-06016	29 - 4
	35 - 3	90464-15804	35 - 24		5 - 19	94107-14811	22 - 5	95702-08500	9 - 8	98507-05020	7 - 3
90183-06815	17 - 3	90464-18246	35 - 23		10 - 8	94109-14807	24 - 2	95702-10500	24 - 5	99001-08600	27 - 3
	32 - 12	90464-23811	34 - 5		10 - 14	94207-14802	22 - 6	95802-06014	20 - 2	99002-07600	5 - 11
90183-06821	35 - 4	90464-36800	29 - 7		10 - 24	94209-14800	24 - 3	95812-06025	6 - 21	99009-15400	12 - 12
90185-10811	22 - 9	90465-13152	15 - 15		11 - 11	94568-F9090	4 - 6	95812-06030	8 - 41	99009-25400	14 - 8
90185-10815	25 - 3	90467-08003	17 - 29	92012-06012	11 - 10	94700-00891	1 - 19	95812-06035	1 - 13		
90185-16800	24 - 15	90467-090A3	6 - 5	92017-05016	25 - 22	95022-06008	35 - 16		8 - 29		
90201-05817	9 - 6	90467-11106	11 - 5	92902-05200	8 - 21	95022-06010	1 - 6	95812-08016	10 - 18		
90201-06034	1 - 24	90467-11825	8 - 31	92902-10200	23 - 15		1 - 27	95812-08045	9 - 9		
90201-10065	18 - 4	90467-12808	8 - 16	93101-23801	13 - 3		11 - 8	95817-06020	11 - 20		
90201-10118	26 - 3	90467-15802	8 - 43	93102-15801	12 - 13		19 - 33	95822-06016	6 - 27		
90201-10831	22 - 10	90467-18806	8 - 26	93102-17812	14 - 13		19 - 35		21 - 22		
90201-12688	29 - 5	90467-22801	6 - 15	93102-19800	5 - 15		19 - 37	95822-06020	21 - 8		
90201-154E8	12 - 11		6 - 17	93102-25815	10 - 12		21 - 19	95827-06030	6 - 13		
90201-16810	24 - 16		6 - 19	93102-32801	14 - 7		36 - 17	95827-06090	11 - 14		
90201-220J8	24 - 17	90480-10332	9 - 5	93106-20816	22 - 3	95022-06012	21 - 17	97002-06012	35 - 21		
90202-26142	19 - 30	90480-14823	21 - 9	93210-07802	24 - 6		25 - 25	97022-06020	36 - 5		
90206-14093	24 - 13	90480-15803	6 - 12	93210-09806	1 - 16	95022-06014	1 - 12	97512-06525	30 - 6		
90208-12808	13 - 13	90501-16004	7 - 6	93210-14816	10 - 21		5 - 14	97602-03110	31 - 6		
90208-25802	14 - 9	90501-16801	25 - 31	93210-16803	5 - 13		25 - 29	97602-05320	8 - 9		
90240-08144	27 - 19	90506-12001	24 - 8	93210-16805	13 - 9	95022-06020	4 - 15	97607-05216	34 - 3		
	27 - 24	90506-15001	24 - 9	93210-17802	8 - 40		5 - 18	97702-40014	31 - 12		
90249-12008	25 - 33	90506-35816	27 - 4	93210-28803	13 - 32		6 - 3	97702-40612	33 - 14		
90280-03017	2 - 9	90508-32768	12 - 9	93210-29800	7 - 7		8 - 4	97702-40616	33 - 11		
90340-12808	10 - 29	90520-03801	35 - 9	93210-30611	8 - 3		36 - 10	97702-50020	25 - 15		
90340-12813	1 - 3	90520-08800	15 - 16	93210-42802	13 - 20	95022-06025	6 - 22		34 - 7		
90380-15810	12 - 10	90520-08803	15 - 17	93211-31800	5 - 16		10 - 15	97707-50012	17 - 9		